



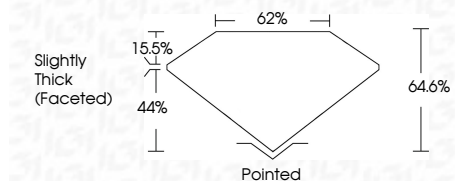
ELECTRONIC COPY

LG795674592
Report verification at igi.org



May 7, 2026
IGI Report Number **LG795674592**
Description **LABORATORY GROWN DIAMOND**
Shape and Cutting Style **OVAL MIXED CUT**
Measurements **11.05 X 7.34 X 4.74 MM**

GRADING RESULTS
Carat Weight **2.69 CARATS**
Color Grade **G**
Clarity Grade **VS 1**



ADDITIONAL GRADING INFORMATION
Polish **EXCELLENT**
Symmetry **EXCELLENT**
Fluorescence **NONE**
Inscription(s) **IGI LG795674592**
Comments: This Laboratory Grown Diamond was created by Chemical Vapor Deposition (CVD) growth process. Type IIa



May 7, 2026
IGI Report No **LG795674592**
OVAL MIXED CUT
Carat Weight **2.69 CARATS**
Color Grade **G**
Clarity Grade **VS 1**
Depth **44.0%**
Table **62%**
Girdle **Slightly Thick (Faceted)**
Culet **Pointed**
Polish **EXCELLENT**
Symmetry **EXCELLENT**
Fluorescence **NONE**
Inscription(s) **IGI LG795674592**
Comments: This Laboratory Grown Diamond was created by Chemical Vapor Deposition (CVD) growth process. Type IIa

LABORATORY GROWN DIAMOND REPORT

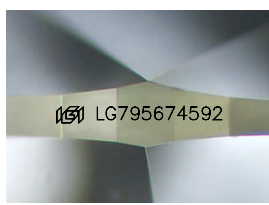
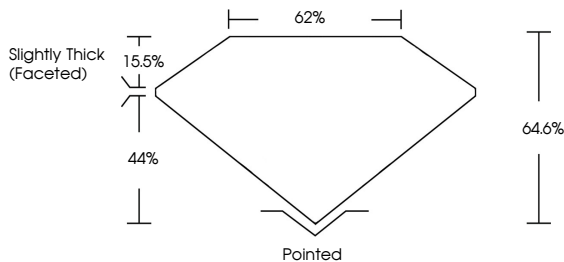
May 7, 2026
IGI Report Number **LG795674592**
Description **LABORATORY GROWN DIAMOND**
Shape and Cutting Style **OVAL MIXED CUT**
Measurements **11.05 X 7.34 X 4.74 MM**

GRADING RESULTS
Carat Weight **2.69 CARATS**
Color Grade **G**
Clarity Grade **VS 1**

ADDITIONAL GRADING INFORMATION
Polish **EXCELLENT**
Symmetry **EXCELLENT**
Fluorescence **NONE**
Inscription(s) **IGI LG795674592**

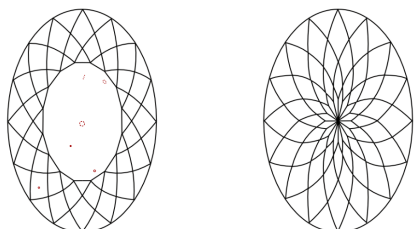
Comments: This Laboratory Grown Diamond was created by Chemical Vapor Deposition (CVD) growth process. Type IIa

PROPORTIONS



Sample Image Used

CLARITY CHARACTERISTICS



KEY TO SYMBOLS
Red symbols indicate internal characteristics.
Green symbols indicate external characteristics.

COLOR

D	E	F	G	H	I	J	Faint	Very Light	Light
---	---	---	---	---	---	---	-------	------------	-------

CLARITY

FL	IF	VS ¹⁻²	VS ¹⁻²	SI ¹⁻²	I ¹⁻³
Flawless	Internally Flawless	Very Very Slightly Included	Very Slightly Included	Slightly Included	Included

