



LABORATORY GROWN DIAMOND REPORT

May 2, 2026
 IGI Report Number **LG795672893**
 Description **LABORATORY GROWN DIAMOND**
 Shape and Cutting Style **PEAR BRILLIANT**
 Measurements **7.00 X 4.21 X 2.63 MM**

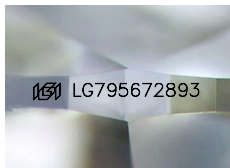
GRADING RESULTS

Carat Weight **0.47 CARAT**
 Color Grade **FANCY YELLOW**
 Clarity Grade **VS 2**

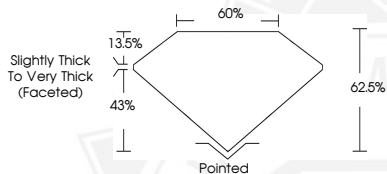
ADDITIONAL GRADING INFORMATION

Polish **VERY GOOD**
 Symmetry **VERY GOOD**
 Fluorescence **NONE**
 Inscription(s) **IGI LG795672893**

Comments: This Laboratory Grown Diamond was created by High Pressure High Temperature (HPHT) growth process.



Sample Image Used



May 2, 2026
 IGI Report Number **LG795672893**
PEAR BRILLIANT
LABORATORY GROWN DIAMOND
7.00 X 4.21 X 2.63 MM
 Carat Weight **0.47 CARAT**
 Color Grade **FANCY YELLOW**
 Clarity Grade **VS 2**
 Polish **VERY GOOD**
 Symmetry **VERY GOOD**
 Fluorescence **NONE**
 Inscription(s) **IGI LG795672893**

Comments: This Laboratory Grown Diamond was created by High Pressure High Temperature (HPHT) growth process.



May 2, 2026
 IGI Report Number **LG795672893**
PEAR BRILLIANT
LABORATORY GROWN DIAMOND
7.00 X 4.21 X 2.63 MM
 Carat Weight **0.47 CARAT**
 Color Grade **FANCY YELLOW**
 Clarity Grade **VS 2**
 Polish **VERY GOOD**
 Symmetry **VERY GOOD**
 Fluorescence **NONE**
 Inscription(s) **IGI LG795672893**

Comments: This Laboratory Grown Diamond was created by High Pressure High Temperature (HPHT) growth process.



THIS DOCUMENT WAS PRODUCED WITH THE FOLLOWING SECURITY MEASURES: SPECIAL DOCUMENT PAPER, INK SCREENS, WATERMARK, BACKGROUND DESIGNS, HOLOGRAM AND OTHER SECURITY FEATURES NOT LISTED AND DO EXCEED DOCUMENT SECURITY INDUSTRY GUIDELINES.