



**INTERNATIONAL
GEMOLOGICAL
INSTITUTE**

ELECTRONIC COPY



May 2, 2026

IGI Report Number LG795672887
ROUND BRILLIANT
LABORATORY GROWN DIAMOND
6.16 - 6.18 X 3.58 MM

0.83 CARAT
FANCY PINK
VS 1
EXCELLENT
EXCELLENT
EXCELLENT
SLIGHT
Inscription(s) IGI LG795672887

Comments: This Laboratory Grown Diamond was created by High Pressure High Temperature (HPHT) growth process. Indications of post-growth treatment.

LABORATORY GROWN DIAMOND REPORT

May 2, 2026
IGI Report Number **LG795672887**
Description **LABORATORY GROWN DIAMOND**
Shape and Cutting Style **ROUND BRILLIANT**
Measurements **6.16 - 6.18 X 3.58 MM**

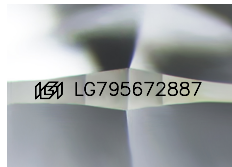
GRADING RESULTS

Carat Weight **0.83 CARAT**
Color Grade **FANCY PINK**
Clarity Grade **VS 1**
Cut Grade **EXCELLENT**

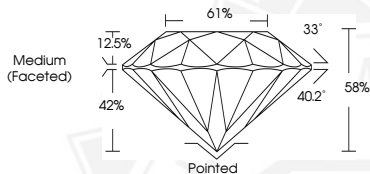
ADDITIONAL GRADING INFORMATION

Polish **EXCELLENT**
Symmetry **EXCELLENT**
Fluorescence **SLIGHT**
Inscription(s) **IGI LG795672887**

Comments: This Laboratory Grown Diamond was created by High Pressure High Temperature (HPHT) growth process. Indications of post-growth treatment.



Sample Image Used



May 2, 2026

IGI Report Number LG795672887
ROUND BRILLIANT
LABORATORY GROWN DIAMOND
6.16 - 6.18 X 3.58 MM

0.83 CARAT
FANCY PINK
VS 1
EXCELLENT
EXCELLENT
EXCELLENT
SLIGHT
Inscription(s) IGI LG795672887

Comments: This Laboratory Grown Diamond was created by High Pressure High Temperature (HPHT) growth process. Indications of post-growth treatment.



THIS DOCUMENT WAS PRODUCED WITH THE FOLLOWING SECURITY MEASURES: SPECIAL DOCUMENT PAPER, INK SCREENS, WATERMARK, BACKGROUND DESIGNS, HOLOGRAM AND OTHER SECURITY FEATURES NOT LISTED AND DO EXCEED DOCUMENT SECURITY INDUSTRY GUIDELINES.

For terms & conditions and to verify this report, please visit www.igi.org