



May 1, 2026

**IGI Report Number** LG795672837  
**ROUND BRILLIANT**  
**LABORATORY GROWN DIAMOND**  
**5.37 - 5.39 X 3.26 MM**

Carat Weight	<b>0.57 CARAT</b>
Color Grade	<b>E</b>
Clarity Grade	<b>VVS 2</b>
Cut Grade	<b>IDEAL</b>
Polish	<b>EXCELLENT</b>
Symmetry	<b>EXCELLENT</b>
Fluorescence	<b>NONE</b>
Inscription(s)	<b>IGI LG795672837</b>

Comments: This Laboratory Grown Diamond was created by Chemical Vapor Deposition (CVD) growth process. Type IIa

**LABORATORY GROWN DIAMOND REPORT**

May 1, 2026  
IGI Report Number **LG795672837**  
Description **LABORATORY GROWN DIAMOND**  
Shape and Cutting Style **ROUND BRILLIANT**  
Measurements **5.37 - 5.39 X 3.26 MM**

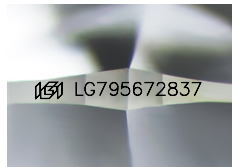
**GRADING RESULTS**

Carat Weight **0.57 CARAT**  
Color Grade **E**  
Clarity Grade **VVS 2**  
Cut Grade **IDEAL**

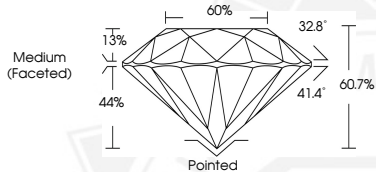
**ADDITIONAL GRADING INFORMATION**

Polish **EXCELLENT**  
Symmetry **EXCELLENT**  
Fluorescence **NONE**  
Inscription(s) **IGI LG795672837**

Comments: This Laboratory Grown Diamond was created by Chemical Vapor Deposition (CVD) growth process. Type IIa



Sample Image Used



May 1, 2026

**IGI Report Number** LG795672837  
**ROUND BRILLIANT**  
**LABORATORY GROWN DIAMOND**  
**5.37 - 5.39 X 3.26 MM**

Carat Weight	<b>0.57 CARAT</b>
Color Grade	<b>E</b>
Clarity Grade	<b>VVS 2</b>
Cut Grade	<b>IDEAL</b>
Polish	<b>EXCELLENT</b>
Symmetry	<b>EXCELLENT</b>
Fluorescence	<b>NONE</b>
Inscription(s)	<b>IGI LG795672837</b>

Comments: This Laboratory Grown Diamond was created by Chemical Vapor Deposition (CVD) growth process. Type IIa



THIS DOCUMENT WAS PRODUCED WITH THE FOLLOWING SECURITY MEASURES: SPECIAL DOCUMENT PAPER, INK SCREENS, WATERMARK, BACKGROUND DESIGNS, HOLOGRAM AND OTHER SECURITY FEATURES NOT LISTED AND DO EXCEED DOCUMENT SECURITY INDUSTRY GUIDELINES.