



ELECTRONIC COPY

LG795672300
Report verification at igi.org



May 2, 2026
IGI Report Number LG795672300
Description LABORATORY GROWN DIAMOND
Shape and Cutting Style CUT CORNERED RECTANGULAR MODIFIED BRILLIANT
Measurements 11.83 X 7.94 X 5.19 MM
GRADING RESULTS
Carat Weight 4.55 CARATS
Color Grade FANCY INTENSE YELLOW
Clarity Grade VVS 2

May 2, 2026
IGI Report Number LG795672300
Description LABORATORY GROWN DIAMOND
Shape and Cutting Style CUT CORNERED RECTANGULAR MODIFIED BRILLIANT
Measurements 11.83 X 7.94 X 5.19 MM

GRADING RESULTS

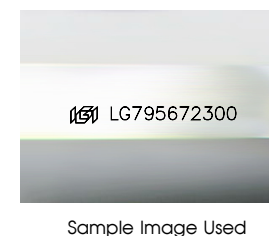
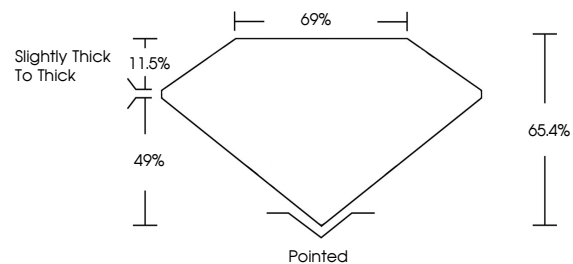
Carat Weight 4.55 CARATS
Color Grade FANCY INTENSE YELLOW
Clarity Grade VVS 2

ADDITIONAL GRADING INFORMATION

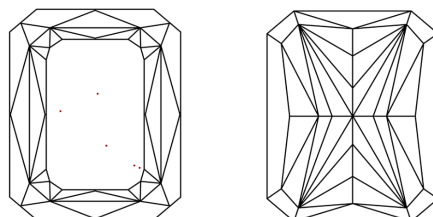
Polish EXCELLENT
Symmetry EXCELLENT
Fluorescence NONE
Inscription(s) IGI LG795672300

Comments: This Laboratory Grown Diamond was created by Chemical Vapor Deposition (CVD) growth process.

PROPORTIONS



CLARITY CHARACTERISTICS



KEY TO SYMBOLS

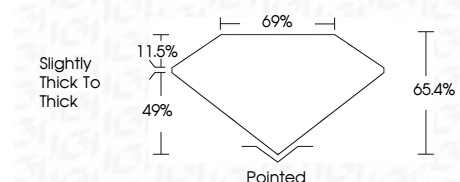
Red symbols indicate internal characteristics.
Green symbols indicate external characteristics.

COLOR

D E F G H I J Faint Very Light Light

CLARITY

FL IF VVS 1-2 VS 1-2 SI 1-2 I 1-3
Flawless Internally Flawless Very Very Slightly Included Very Slightly Included Slightly Included Included



ADDITIONAL GRADING INFORMATION

Polish EXCELLENT
Symmetry EXCELLENT
Fluorescence NONE
Inscription(s) IGI LG795672300
Comments: This Laboratory Grown Diamond was created by Chemical Vapor Deposition (CVD) growth process.



May 2, 2026
IGI Report No LG795672300
CUT CORNERED RECT. MODIFIED BRILLIANT
11.83 X 7.94 X 5.19 MM
4.55 CARATS
FANCY INTENSE YELLOW
VVS 2
65.4%
69%
Slightly thick to thick
Pointed
EXCELLENT
EXCELLENT
NONE
IGI LG795672300
Comments: This Laboratory Grown Diamond was created by Chemical Vapor Deposition (CVD) growth process.