



**ELECTRONIC COPY**

LG795671926  
Report verification at igi.org



May 7, 2026

IGI Report Number **LG795671926**

Description **LABORATORY GROWN DIAMOND**

Shape and Cutting Style **CUSHION MIXED CUT**

Measurements **10.42 X 8.12 X 5.19 MM**

**GRADING RESULTS**

Carat Weight **4.07 CARATS**

Color Grade **FANCY INTENSE PINK**

Clarity Grade **VS 2**

May 7, 2026

IGI Report Number **LG795671926**

Description **LABORATORY GROWN DIAMOND**

Shape and Cutting Style **CUSHION MIXED CUT**

Measurements **10.42 X 8.12 X 5.19 MM**

**GRADING RESULTS**

Carat Weight **4.07 CARATS**

Color Grade **FANCY INTENSE PINK**

Clarity Grade **VS 2**

**ADDITIONAL GRADING INFORMATION**

Polish **EXCELLENT**

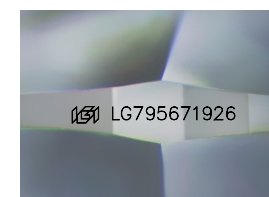
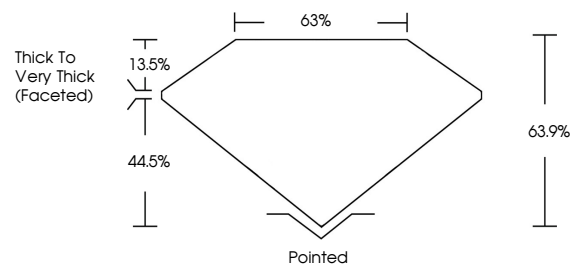
Symmetry **EXCELLENT**

Fluorescence **SLIGHT**

Inscription(s) **LG795671926**

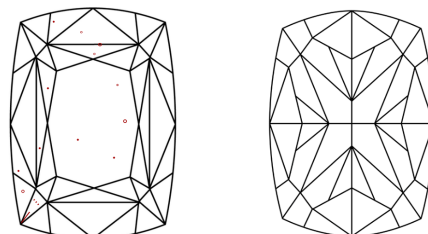
Comments: This Laboratory Grown Diamond was created by Chemical Vapor Deposition (CVD) growth process. Indications of post-growth treatment.

**PROPORTIONS**



Sample Image Used

**CLARITY CHARACTERISTICS**



**KEY TO SYMBOLS**

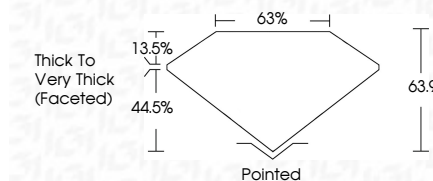
Red symbols indicate internal characteristics.  
Green symbols indicate external characteristics.

**COLOR**

D E F G H I J Faint Very Light Light

**CLARITY**

FL	IF	VS <sup>1-2</sup>	VS <sup>1-2</sup>	SI <sup>1-2</sup>	I <sup>1-3</sup>
Flawless	Internally Flawless	Very Very Slightly Included	Very Slightly Included	Slightly Included	Included



**ADDITIONAL GRADING INFORMATION**

Polish **EXCELLENT**

Symmetry **EXCELLENT**

Fluorescence **SLIGHT**

Inscription(s) **LG795671926**

Comments: This Laboratory Grown Diamond was created by Chemical Vapor Deposition (CVD) growth process. Indications of post-growth treatment.



May 7, 2026  
IGI Report No LG795671926  
CUSHION MIXED CUT

4.07 CARATS  
FANCY INTENSE PINK  
VS 2  
63.9%  
63%

10.42 X 8.12 X 5.19 MM  
Thick to Very Thick (Faceted)

Pointed  
EXCELLENT  
EXCELLENT  
SLIGHT  
IGI LG795671926

Comments: This Laboratory Grown Diamond was created by Chemical Vapor Deposition (CVD) growth process. Indications of post-growth treatment.