



**INTERNATIONAL
GEMOLOGICAL
INSTITUTE**

ELECTRONIC COPY



April 29, 2026

IGI Report Number LG795671532
**CUT CORNERED RECTANGULAR
MODIFIED BRILLIANT**
LABORATORY GROWN DIAMOND
5.89 X 3.93 X 2.65 MM

Carat Weight **0.53 CARAT**
Color Grade **D**
Clarity Grade **VVS 2**
Polish **EXCELLENT**
Symmetry **EXCELLENT**
Fluorescence **NONE**
Inscription(s) **IGI LG795671532**

Comments: This Laboratory Grown Diamond was created by Chemical Vapor Deposition (CVD) growth process. Type IIa

LABORATORY GROWN DIAMOND REPORT

April 29, 2026

IGI Report Number

LG795671532

Description

LABORATORY GROWN DIAMOND

Shape and Cutting Style

**CUT CORNERED RECTANGULAR MODIFIED
BRILLIANT**

Measurements

5.89 X 3.93 X 2.65 MM

GRADING RESULTS

Carat Weight

0.53 CARAT

Color Grade

D

Clarity Grade

VVS 2

ADDITIONAL GRADING INFORMATION

Polish

EXCELLENT

Symmetry

EXCELLENT

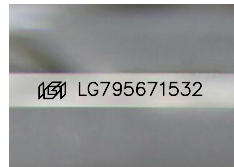
Fluorescence

NONE

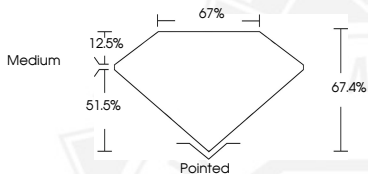
Inscription(s)

IGI LG795671532

Comments: This Laboratory Grown Diamond was created by Chemical Vapor Deposition (CVD) growth process. Type IIa



Sample Image Used



April 29, 2026

IGI Report Number LG795671532
**CUT CORNERED RECTANGULAR
MODIFIED BRILLIANT**
LABORATORY GROWN DIAMOND
5.89 X 3.93 X 2.65 MM

Carat Weight **0.53 CARAT**
Color Grade **D**
Clarity Grade **VVS 2**
Polish **EXCELLENT**
Symmetry **EXCELLENT**
Fluorescence **NONE**
Inscription(s) **IGI LG795671532**

Comments: This Laboratory Grown Diamond was created by Chemical Vapor Deposition (CVD) growth process. Type IIa



THIS DOCUMENT WAS PRODUCED WITH THE FOLLOWING SECURITY MEASURES: SPECIAL DOCUMENT PAPER, INK SCREENS, WATERMARK, BACKGROUND DESIGNS, HOLOGRAM AND OTHER SECURITY FEATURES NOT LISTED AND DO EXCEED DOCUMENT SECURITY INDUSTRY GUIDELINES.

For terms & conditions and to verify this report, please visit www.igi.org