



ELECTRONIC COPY

LG795669132
Report verification at igi.org



April 30, 2026
IGI Report Number LG795669132
Description LABORATORY GROWN DIAMOND
Shape and Cutting Style SQUARE CUSHION MODIFIED BRILLIANT
Measurements 5.61 X 5.58 X 3.71 MM
GRADING RESULTS
Carat Weight 1.07 CARAT
Color Grade FANCY VIVID BLUE
Clarity Grade VVS 2

April 30, 2026
IGI Report Number LG795669132
Description LABORATORY GROWN DIAMOND
Shape and Cutting Style SQUARE CUSHION MODIFIED BRILLIANT
Measurements 5.61 X 5.58 X 3.71 MM

GRADING RESULTS

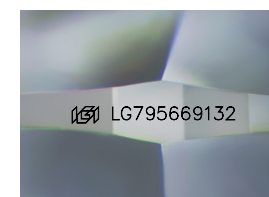
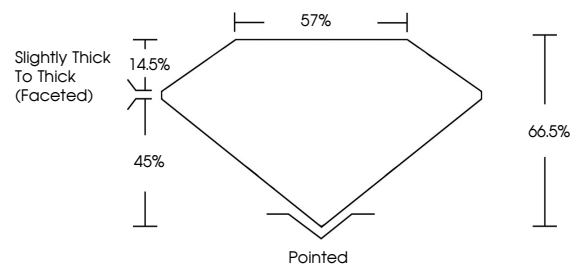
Carat Weight 1.07 CARAT
Color Grade FANCY VIVID BLUE
Clarity Grade VVS 2

ADDITIONAL GRADING INFORMATION

Polish EXCELLENT
Symmetry EXCELLENT
Fluorescence NONE
Inscription(s) LG795669132

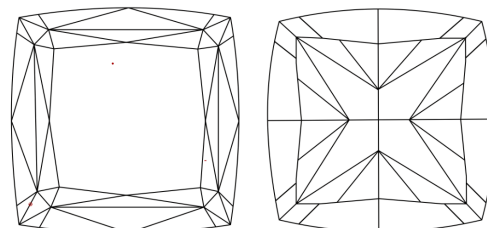
Comments: This Laboratory Grown Diamond was created by Chemical Vapor Deposition (CVD) growth process.
Indications of post-growth treatment.

PROPORTIONS



Sample Image Used

CLARITY CHARACTERISTICS



KEY TO SYMBOLS

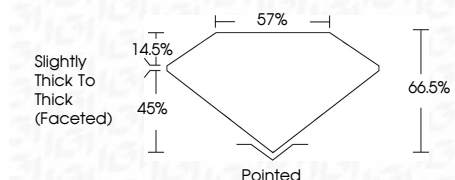
Red symbols indicate internal characteristics.
Green symbols indicate external characteristics.

COLOR

D E F G H I J Faint Very Light Light

CLARITY

FL IF VVS 1-2 VS 1-2 SI 1-2 I 1-3
Flawless Internally Flawless Very Very Slightly Included Very Slightly Included Slightly Included Included



ADDITIONAL GRADING INFORMATION

Polish EXCELLENT
Symmetry EXCELLENT
Fluorescence NONE
Inscription(s) LG795669132
Comments: This Laboratory Grown Diamond was created by Chemical Vapor Deposition (CVD) growth process.
Indications of post-growth treatment.



April 30, 2026
IGI Report No LG795669132
SQUARE CUSHION MODIFIED BRILLIANT
1.07 CARAT
FANCY VIVID BLUE
VVS 2
5.61 X 5.58 X 3.71 MM
66.6%
57%
Slightly Thick To Thick (Faceted)
Pointed
EXCELLENT
EXCELLENT
NONE
LG795669132
Comments: This Laboratory Grown Diamond was created by Chemical Vapor Deposition (CVD) growth process.
Indications of post-growth treatment.