



**ELECTRONIC COPY**

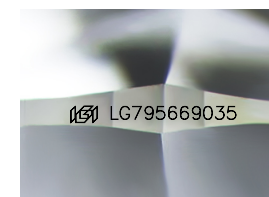
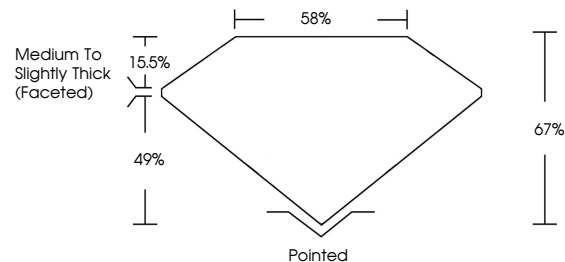
LG795669035  
Report verification at igi.org



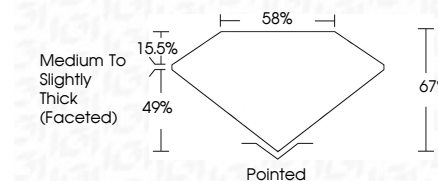
April 25, 2026  
IGI Report Number **LG795669035**  
Description **LABORATORY GROWN DIAMOND**  
Shape and Cutting Style **CUSHION MODIFIED BRILLIANT**  
Measurements **10.58 X 7.85 X 5.26 MM**  
**GRADING RESULTS**  
Carat Weight **3.43 CARATS**  
Color Grade **F**  
Clarity Grade **VVS 1**

April 25, 2026  
IGI Report Number **LG795669035**  
Description **LABORATORY GROWN DIAMOND**  
Shape and Cutting Style **CUSHION MODIFIED BRILLIANT**  
Measurements **10.58 X 7.85 X 5.26 MM**  
**GRADING RESULTS**  
Carat Weight **3.43 CARATS**  
Color Grade **F**  
Clarity Grade **VVS 1**

**PROPORTIONS**



Sample Image Used



**ADDITIONAL GRADING INFORMATION**  
Polish **EXCELLENT**  
Symmetry **EXCELLENT**  
Fluorescence **NONE**  
Inscription(s) **IGI LG795669035**  
Comments: This Laboratory Grown Diamond was created by Chemical Vapor Deposition (CVD) growth process.  
Type IIa

**COLOR**

D E F G H I J Faint Very Light Light

**CLARITY**

FL	IF	VS <sup>1-2</sup>	VS <sup>1-2</sup>	SI <sup>1-2</sup>	I <sup>1-3</sup>
Flawless	Internally Flawless	Very Very Slightly Included	Very Slightly Included	Slightly Included	Included

**ADDITIONAL GRADING INFORMATION**

Polish **EXCELLENT**  
Symmetry **EXCELLENT**  
Fluorescence **NONE**  
Inscription(s) **IGI LG795669035**  
Comments: This Laboratory Grown Diamond was created by Chemical Vapor Deposition (CVD) growth process.  
Type IIa



April 25, 2026  
IGI Report No **LG795669035**  
**CUSHION MODIFIED BRILLIANT**  
**3.43 CARATS**  
Carat Weight **F**  
Color Grade **VVS 1**  
Clarity Grade **67%**  
Depth **85%**  
Table **Medium to Slightly Thick (Faceted)**  
Girdle **Pointed**  
Culet **EXCELLENT**  
Polish **EXCELLENT**  
Symmetry **NONE**  
Fluorescence **NONE**  
Inscription(s) **IGI LG795669035**  
Comments: This Laboratory Grown Diamond was created by Chemical Vapor Deposition (CVD) growth process.  
Type IIa