



**ELECTRONIC COPY**

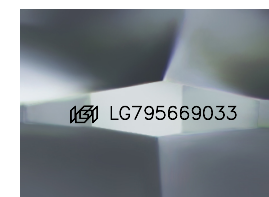
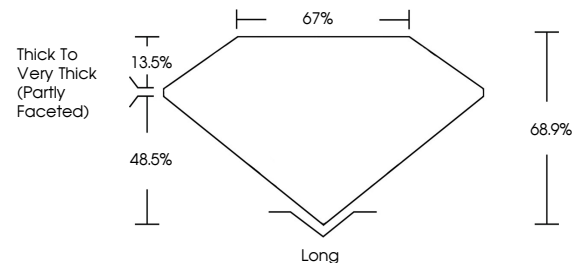
LG795669033  
Report verification at igi.org



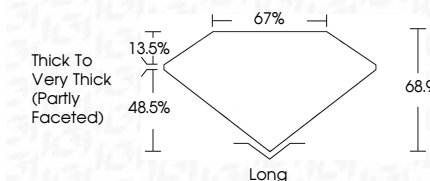
April 25, 2026  
IGI Report Number **LG795669033**  
Description **LABORATORY GROWN DIAMOND**  
Shape and Cutting Style **RECTANGULAR CUSHION MIXED CUT**  
Measurements **11.90 X 8.33 X 5.74 MM**  
**GRADING RESULTS**  
Carat Weight **6.01 CARATS**  
Color Grade **F**  
Clarity Grade **VVS 2**

April 25, 2026  
IGI Report Number **LG795669033**  
Description **LABORATORY GROWN DIAMOND**  
Shape and Cutting Style **RECTANGULAR CUSHION MIXED CUT**  
Measurements **11.90 X 8.33 X 5.74 MM**  
**GRADING RESULTS**  
Carat Weight **6.01 CARATS**  
Color Grade **F**  
Clarity Grade **VVS 2**

**PROPORTIONS**



Sample Image Used



**ADDITIONAL GRADING INFORMATION**

Polish **EXCELLENT**  
Symmetry **EXCELLENT**  
Fluorescence **NONE**  
Inscription(s) **IGI LG795669033**

Comments: This Laboratory Grown Diamond was created by Chemical Vapor Deposition (CVD) growth process.  
Type IIa

**COLOR**

D E F G H I J Faint Very Light Light

**CLARITY**

FL	IF	VVS <sup>1-2</sup>	VS <sup>1-2</sup>	SI <sup>1-2</sup>	I <sup>1-3</sup>
Flawless	Internally Flawless	Very Very Slightly Included	Very Slightly Included	Slightly Included	Included

**ADDITIONAL GRADING INFORMATION**

Polish **EXCELLENT**  
Symmetry **EXCELLENT**  
Fluorescence **NONE**  
Inscription(s) **IGI LG795669033**  
Comments: This Laboratory Grown Diamond was created by Chemical Vapor Deposition (CVD) growth process.  
Type IIa



**IGI**



April 25, 2026  
IGI Report No **LG795669033**  
**RECTANGULAR CUSHION MIXED CUT**  
**11.90 X 8.33 X 5.74 MM**  
Carat Weight **6.01 CARATS**  
Color Grade **F**  
Clarity Grade **VVS 2**  
Depth **48.5%**  
Table **13.5%**  
Girdle **67%**  
Culet **Thick To Very Thick (Partly Faceted)**  
Polish **EXCELLENT**  
Symmetry **EXCELLENT**  
Fluorescence **NONE**  
Inscription(s) **IGI LG795669033**  
Comments: This Laboratory Grown Diamond was created by Chemical Vapor Deposition (CVD) growth process.  
Type IIa