



**ELECTRONIC COPY**

LG795668835  
Report verification at igi.org



May 1, 2026

IGI Report Number **LG795668835**

Description **LABORATORY GROWN DIAMOND**

Shape and Cutting Style **PRINCESS CUT**

Measurements **6.07 X 6.04 X 4.44 MM**

**GRADING RESULTS**

Carat Weight **1.43 CARAT**

Color Grade **FANCY VIVID BLUE**

Clarity Grade **VS 1**

May 1, 2026  
IGI Report Number **LG795668835**  
Description **LABORATORY GROWN DIAMOND**  
Shape and Cutting Style **PRINCESS CUT**  
Measurements **6.07 X 6.04 X 4.44 MM**

**GRADING RESULTS**

Carat Weight **1.43 CARAT**

Color Grade **FANCY VIVID BLUE**

Clarity Grade **VS 1**

**ADDITIONAL GRADING INFORMATION**

Polish **EXCELLENT**

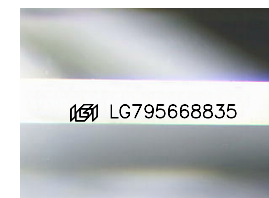
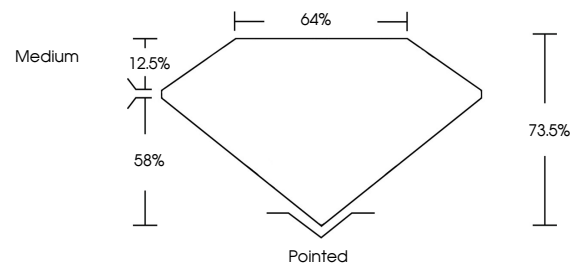
Symmetry **EXCELLENT**

Fluorescence **NONE**

Inscription(s) **IGI LG795668835**

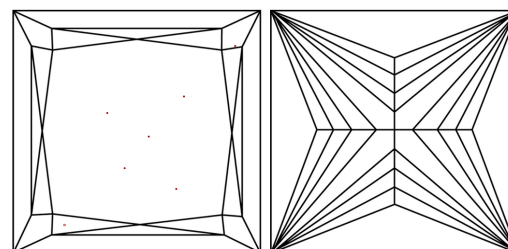
Comments: This Laboratory Grown Diamond was created by Chemical Vapor Deposition (CVD) growth process.  
Indications of post-growth treatment.

**PROPORTIONS**



Sample Image Used

**CLARITY CHARACTERISTICS**



**KEY TO SYMBOLS**

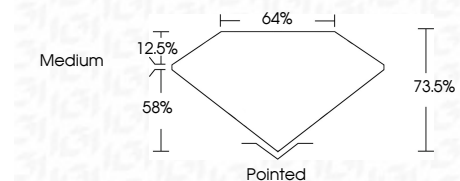
Red symbols indicate internal characteristics.  
Green symbols indicate external characteristics.

**COLOR**

D E F G H I J Faint Very Light Light

**CLARITY**

FL	IF	VS <sup>1-2</sup>	VS <sup>1-2</sup>	SI <sup>1-2</sup>	I <sup>1-3</sup>
Flawless	Internally Flawless	Very Very Slightly Included	Very Slightly Included	Slightly Included	Included



**ADDITIONAL GRADING INFORMATION**

Polish **EXCELLENT**

Symmetry **EXCELLENT**

Fluorescence **NONE**

Inscription(s) **IGI LG795668835**

Comments: This Laboratory Grown Diamond was created by Chemical Vapor Deposition (CVD) growth process.  
Indications of post-growth treatment.



May 1, 2026  
IGI Report No LG795668835  
PRINCESS CUT

1.43 CARAT  
Carat Weight  
FANCY VIVID BLUE  
Color Grade

VS 1  
Depth 73.5%  
Table 64%  
Girdle Medium

Pointed  
EXCELLENT  
EXCELLENT  
NONE  
IGI LG795668835

Comments: This Laboratory Grown Diamond was created by Chemical Vapor Deposition (CVD) growth process.  
Indications of post-growth treatment.