



April 28, 2026

IGI Report Number **LG795667475**

OVAL BRILLIANT

LABORATORY GROWN DIAMOND

6.66 X 4.51 X 2.82 MM

Carat Weight **0.53 CARAT**

Color Grade **D**

Clarity Grade **VVS 1**

Polish **EXCELLENT**

Symmetry **EXCELLENT**

Fluorescence **NONE**

Inscription(s) **IGI LG795667475**

Comments: This Laboratory Grown Diamond was created by Chemical Vapor Deposition (CVD) growth process. Type IIa

LABORATORY GROWN DIAMOND REPORT

April 28, 2026

IGI Report Number

LG795667475

Description

LABORATORY GROWN DIAMOND

Shape and Cutting Style

OVAL BRILLIANT

Measurements

6.66 X 4.51 X 2.82 MM

GRADING RESULTS

Carat Weight

0.53 CARAT

Color Grade

D

Clarity Grade

VVS 1

ADDITIONAL GRADING INFORMATION

Polish

EXCELLENT

Symmetry

EXCELLENT

Fluorescence

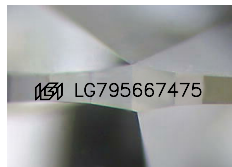
NONE

Inscription(s)

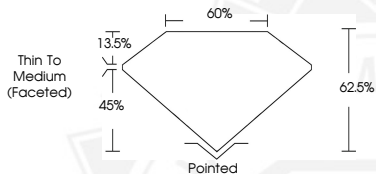
IGI LG795667475

Comments: This Laboratory Grown Diamond was created by Chemical Vapor Deposition (CVD) growth process.

Type IIa



Sample Image Used



April 28, 2026

IGI Report Number **LG795667475**

OVAL BRILLIANT

LABORATORY GROWN DIAMOND

6.66 X 4.51 X 2.82 MM

Carat Weight **0.53 CARAT**

Color Grade **D**

Clarity Grade **VVS 1**

Polish **EXCELLENT**

Symmetry **EXCELLENT**

Fluorescence **NONE**

Inscription(s) **IGI LG795667475**

Comments: This Laboratory Grown Diamond was created by Chemical Vapor Deposition (CVD) growth process. Type IIa



THIS DOCUMENT WAS PRODUCED WITH THE FOLLOWING SECURITY MEASURES: SPECIAL DOCUMENT PAPER, INK SCREENS, WATERMARK, BACKGROUND DESIGNS, HOLOGRAM AND OTHER SECURITY FEATURES NOT LISTED AND DO EXCEED DOCUMENT SECURITY INDUSTRY GUIDELINES.