



ELECTRONIC COPY

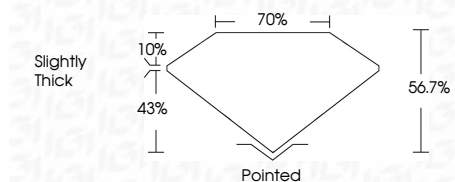
LG795666815
Report verification at igi.org



April 25, 2026
IGI Report Number **LG795666815**
Description **LABORATORY GROWN DIAMOND**
Shape and Cutting Style **MODIFIED LOZENGE STEP CUT**
Measurements **12.30 X 8.04 X 4.56 MM**

GRADING RESULTS

Carat Weight **3.09 CARATS**
Color Grade **E**
Clarity Grade **VS 1**



ADDITIONAL GRADING INFORMATION

Polish **EXCELLENT**
Symmetry **EXCELLENT**
Fluorescence **NONE**
Inscription(s) **IGI LG795666815**
Comments: This Laboratory Grown Diamond was created by Chemical Vapor Deposition (CVD) growth process. Type IIa



April 25, 2026
IGI Report No LG795666815
MODIFIED LOZENGE STEP CUT
12.30 X 8.04 X 4.56 MM
3.09 CARATS
E
VS 1
56.7%
70%
Slightly Thick
Pointed
EXCELLENT
EXCELLENT
NONE
IGI LG795666815
Comments: This Laboratory Grown Diamond was created by Chemical Vapor Deposition (CVD) growth process. Type IIa

LABORATORY GROWN DIAMOND REPORT

April 25, 2026
IGI Report Number **LG795666815**
Description **LABORATORY GROWN DIAMOND**
Shape and Cutting Style **MODIFIED LOZENGE STEP CUT**
Measurements **12.30 X 8.04 X 4.56 MM**

GRADING RESULTS

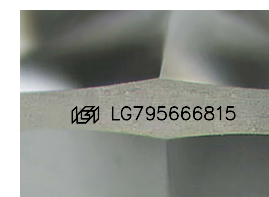
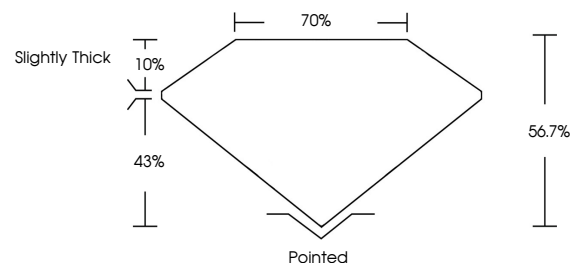
Carat Weight **3.09 CARATS**
Color Grade **E**
Clarity Grade **VS 1**

ADDITIONAL GRADING INFORMATION

Polish **EXCELLENT**
Symmetry **EXCELLENT**
Fluorescence **NONE**
Inscription(s) **IGI LG795666815**

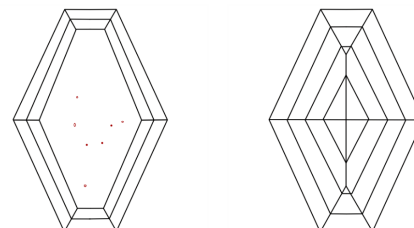
Comments: This Laboratory Grown Diamond was created by Chemical Vapor Deposition (CVD) growth process. Type IIa

PROPORTIONS



Sample Image Used

CLARITY CHARACTERISTICS



KEY TO SYMBOLS

Red symbols indicate internal characteristics.
Green symbols indicate external characteristics.

COLOR

D E F G H I J Faint Very Light Light

CLARITY

FL	IF	VS ¹⁻²	VS ¹⁻²	SI ¹⁻²	I ¹⁻³
Flawless	Internally Flawless	Very Very Slightly Included	Very Slightly Included	Slightly Included	Included

