



ELECTRONIC COPY

LG795666723
Report verification at igi.org



April 30, 2026
IGI Report Number **LG795666723**
Description **LABORATORY GROWN DIAMOND**
Shape and Cutting Style **ROUND BRILLIANT**
Measurements **11.12 - 11.17 X 6.55 MM**
GRADING RESULTS
Carat Weight **5.02 CARATS**
Color Grade **FANCY PINK**
Clarity Grade **VS 1**
Cut Grade **EXCELLENT**

April 30, 2026
IGI Report Number **LG795666723**
Description **LABORATORY GROWN DIAMOND**
Shape and Cutting Style **ROUND BRILLIANT**
Measurements **11.12 - 11.17 X 6.55 MM**

GRADING RESULTS

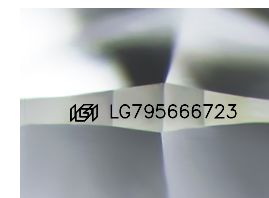
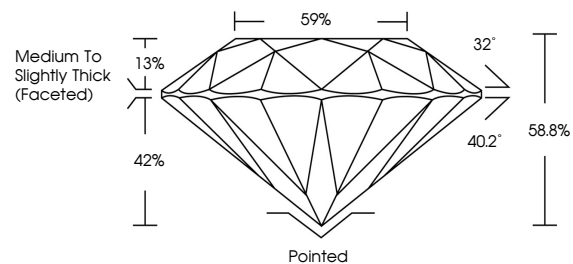
Carat Weight **5.02 CARATS**
Color Grade **FANCY PINK**
Clarity Grade **VS 1**
Cut Grade **EXCELLENT**

ADDITIONAL GRADING INFORMATION

Polish **VERY GOOD**
Symmetry **EXCELLENT**
Fluorescence **SLIGHT**
Inscription(s) **IGI LG795666723**

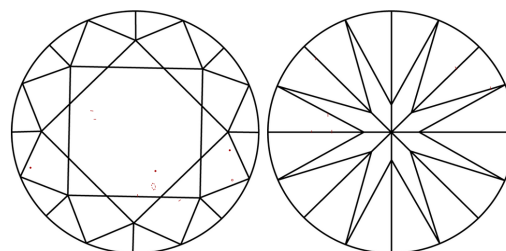
Comments: This Laboratory Grown Diamond was created by Chemical Vapor Deposition (CVD) growth process.
Indications of post-growth treatment.

PROPORTIONS



Sample Image Used

CLARITY CHARACTERISTICS



KEY TO SYMBOLS

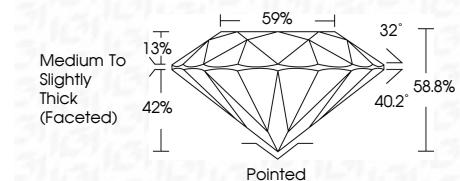
Red symbols indicate internal characteristics.
Green symbols indicate external characteristics.

COLOR

D E F G H I J Faint Very Light Light

CLARITY

FL	IF	VS ¹⁻²	VS ¹⁻²	SI ¹⁻²	I ¹⁻³
Flawless	Internally Flawless	Very Very Slightly Included	Very Slightly Included	Slightly Included	Included



ADDITIONAL GRADING INFORMATION

Polish **VERY GOOD**
Symmetry **EXCELLENT**
Fluorescence **SLIGHT**
Inscription(s) **IGI LG795666723**
Comments: This Laboratory Grown Diamond was created by Chemical Vapor Deposition (CVD) growth process.
Indications of post-growth treatment.



April 30, 2026
IGI Report No LG795666723
ROUND BRILLIANT
11.12 - 11.17 X 6.55 MM
5.02 CARATS
FANCY PINK
VS 1
EXCELLENT
88.0%
59%
Medium To Slightly Thick (Faceted)
Pointed
VERY GOOD
EXCELLENT
SLIGHT
IGI LG795666723
Comments: This Laboratory Grown Diamond was created by Chemical Vapor Deposition (CVD) growth process.
Indications of post-growth treatment.