



ELECTRONIC COPY

LG795666720
Report verification at igi.org



April 30, 2026

IGI Report Number **LG795666720**

Description **LABORATORY GROWN DIAMOND**

Shape and Cutting Style **CUT CORNERED
RECTANGULAR MODIFIED
BRILLIANT**

Measurements **12.02 X 7.96 X 5.61 MM**

GRADING RESULTS

Carat Weight **5.01 CARATS**

Color Grade **FANCY VIVID YELLOW**

Clarity Grade **VS 1**

LABORATORY GROWN DIAMOND REPORT

April 30, 2026

IGI Report Number **LG795666720**

Description **LABORATORY GROWN DIAMOND**

Shape and Cutting Style **CUT CORNERED RECTANGULAR
MODIFIED BRILLIANT**

Measurements **12.02 X 7.96 X 5.61 MM**

GRADING RESULTS

Carat Weight **5.01 CARATS**

Color Grade **FANCY VIVID YELLOW**

Clarity Grade **VS 1**

ADDITIONAL GRADING INFORMATION

Polish **EXCELLENT**

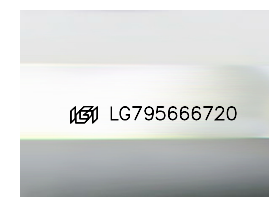
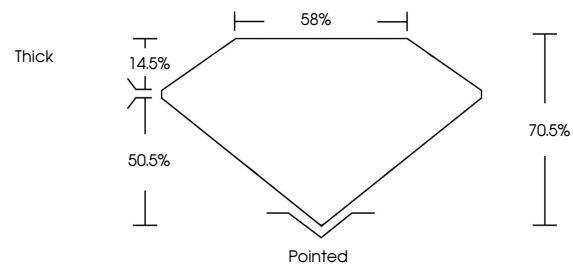
Symmetry **EXCELLENT**

Fluorescence **NONE**

Inscription(s) **IGI LG795666720**

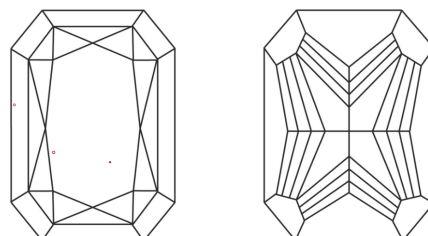
Comments: This Laboratory Grown Diamond was created by Chemical Vapor Deposition (CVD) growth process.

PROPORTIONS



Sample Image Used

CLARITY CHARACTERISTICS



KEY TO SYMBOLS

Red symbols indicate internal characteristics.
Green symbols indicate external characteristics.

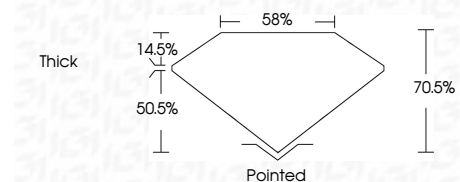
COLOR

D E F G H I J Faint Very Light Light

CLARITY

FL IF VS¹⁻² VS¹⁻² SI¹⁻² I¹⁻³

Flawless Internally Flawless Very Very Slightly Included Very Slightly Included Slightly Included Included



ADDITIONAL GRADING INFORMATION

Polish **EXCELLENT**

Symmetry **EXCELLENT**

Fluorescence **NONE**

Inscription(s) **IGI LG795666720**

Comments: This Laboratory Grown Diamond was created by Chemical Vapor Deposition (CVD) growth process.



IGI



April 30, 2026
IGI Report No LG795666720
CUT CORNERED RECT. MODIFIED BRILLIANT

12.02 X 7.96 X 5.61 MM
5.01 CARATS
FANCY VIVID YELLOW
VS 1
70.5%
50.5%
Thick

Pointed
EXCELLENT
EXCELLENT
NONE
IGI LG795666720

Comments: This Laboratory Grown Diamond was created by Chemical Vapor Deposition (CVD) growth process.