



ELECTRONIC COPY

LG795666680
Report verification at igi.org



April 30, 2026

IGI Report Number LG795666680

Description LABORATORY GROWN DIAMOND

Shape and Cutting Style EMERALD CUT

Measurements 13.38 X 3.95 X 2.43 MM

GRADING RESULTS

Carat Weight 1.34 CARAT

Color Grade FANCY VIVID BLUE

Clarity Grade VS 1

April 30, 2026
IGI Report Number LG795666680
Description LABORATORY GROWN DIAMOND
Shape and Cutting Style EMERALD CUT
Measurements 13.38 X 3.95 X 2.43 MM

GRADING RESULTS

Carat Weight 1.34 CARAT

Color Grade FANCY VIVID BLUE

Clarity Grade VS 1

ADDITIONAL GRADING INFORMATION

Polish EXCELLENT

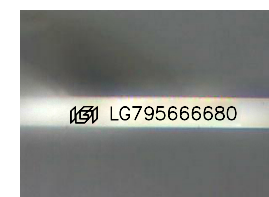
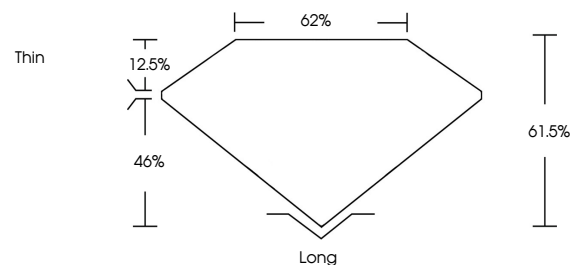
Symmetry EXCELLENT

Fluorescence NONE

Inscription(s) IGI LG795666680

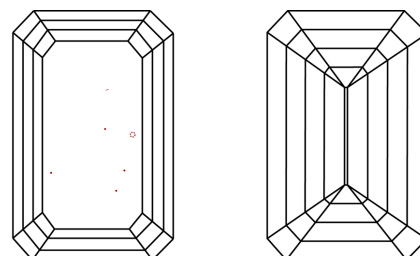
Comments: This Laboratory Grown Diamond was created by Chemical Vapor Deposition (CVD) growth process. Indications of post-growth treatment.

PROPORTIONS



Sample Image Used

CLARITY CHARACTERISTICS



KEY TO SYMBOLS

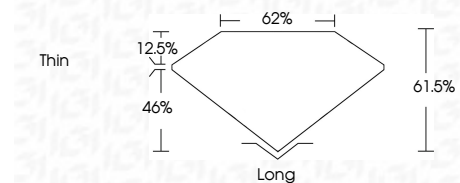
Red symbols indicate internal characteristics. Green symbols indicate external characteristics.

COLOR

D E F G H I J Faint Very Light Light

CLARITY

FL IF VS 1-2 VS 2-2 SI 1-2 I 1-3
Flawless Internally Flawless Very Very Slightly Included Very Slightly Included Slightly Included Included



ADDITIONAL GRADING INFORMATION

Polish EXCELLENT

Symmetry EXCELLENT

Fluorescence NONE

Inscription(s) IGI LG795666680

Comments: This Laboratory Grown Diamond was created by Chemical Vapor Deposition (CVD) growth process. Indications of post-growth treatment.



April 30, 2026
IGI Report No LG795666680
EMERALD CUT
1.34 CARAT
FANCY VIVID BLUE
VS 1
61.6%
62%
Thin
Long
EXCELLENT
EXCELLENT
NONE
IGI LG795666680
Comments: This Laboratory Grown Diamond was created by Chemical Vapor Deposition (CVD) growth process. Indications of post-growth treatment.