



**ELECTRONIC COPY**

LG795666560  
Report verification at igi.org



April 28, 2026

IGI Report Number **LG795666560**

Description **LABORATORY GROWN DIAMOND**

Shape and Cutting Style **SQUARE STEP CUT**

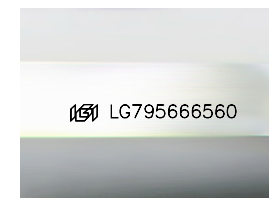
Measurements **8.76 X 8.69 X 5.86 MM**

**GRADING RESULTS**

Carat Weight **4.06 CARATS**

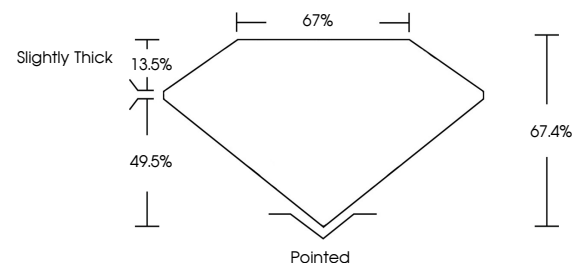
Color Grade **F**

Clarity Grade **VVS 2**

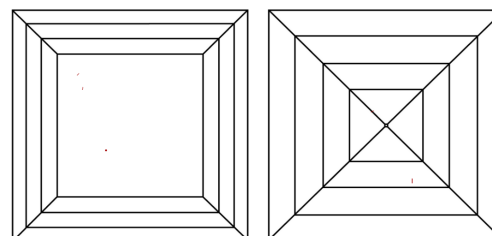


Sample Image Used

**PROPORTIONS**



**CLARITY CHARACTERISTICS**



**KEY TO SYMBOLS**

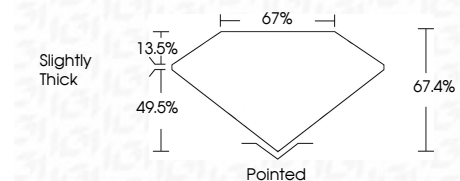
Red symbols indicate internal characteristics.  
Green symbols indicate external characteristics.

**COLOR**

D E F G H I J Faint Very Light Light

**CLARITY**

FL	IF	VVS <sup>1-2</sup>	VS <sup>1-2</sup>	SI <sup>1-2</sup>	I <sup>1-3</sup>
Flawless	Internally Flawless	Very Very Slightly Included	Very Slightly Included	Slightly Included	Included



**ADDITIONAL GRADING INFORMATION**

Polish **EXCELLENT**

Symmetry **EXCELLENT**

Fluorescence **NONE**

Inscription(s) **IGI LG795666560**

Comments: This Laboratory Grown Diamond was created by Chemical Vapor Deposition (CVD) growth process. Type IIa



April 28, 2026  
IGI Report No LG795666560  
**SQUARE STEP CUT**  
8.76 X 8.69 X 5.86 MM  
4.06 CARATS  
F  
VVS 2  
67.4%  
67%  
Slightly Thick  
Pointed  
EXCELLENT  
EXCELLENT  
NONE  
IGI LG795666560

Comments: This Laboratory Grown Diamond was created by Chemical Vapor Deposition (CVD) growth process. Type IIa