



ELECTRONIC COPY

LG795666520
Report verification at igi.org



April 28, 2026
IGI Report Number **LG795666520**
Description **LABORATORY GROWN DIAMOND**
Shape and Cutting Style **MODIFIED OCTAGON STEP CUT**
Measurements **8.90 X 5.25 X 3.39 MM**
GRADING RESULTS
Carat Weight **1.49 CARAT**
Color Grade **D**
Clarity Grade **VVS 2**

LABORATORY GROWN DIAMOND REPORT

April 28, 2026
IGI Report Number **LG795666520**
Description **LABORATORY GROWN DIAMOND**
Shape and Cutting Style **MODIFIED OCTAGON STEP CUT**
Measurements **8.90 X 5.25 X 3.39 MM**

GRADING RESULTS

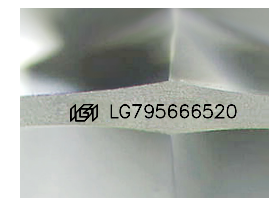
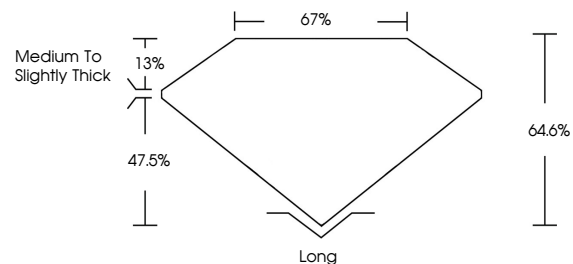
Carat Weight **1.49 CARAT**
Color Grade **D**
Clarity Grade **VVS 2**

ADDITIONAL GRADING INFORMATION

Polish **EXCELLENT**
Symmetry **EXCELLENT**
Fluorescence **NONE**
Inscription(s) **IGI LG795666520**

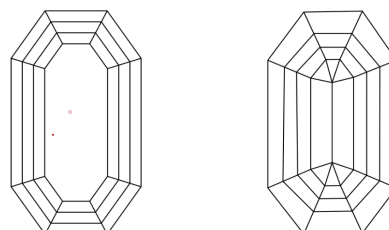
Comments: This Laboratory Grown Diamond was created by Chemical Vapor Deposition (CVD) growth process.
Type IIa

PROPORTIONS



Sample Image Used

CLARITY CHARACTERISTICS



KEY TO SYMBOLS

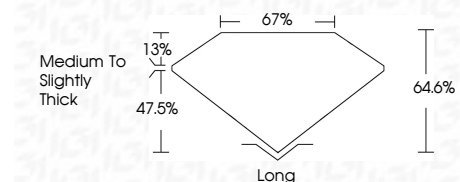
Red symbols indicate internal characteristics.
Green symbols indicate external characteristics.

COLOR

D E F G H I J Faint Very Light Light

CLARITY

FL	IF	VVS ¹⁻²	VS ¹⁻²	SI ¹⁻²	I ¹⁻³
Flawless	Internally Flawless	Very Very Slightly Included	Very Slightly Included	Slightly Included	Included



ADDITIONAL GRADING INFORMATION

Polish **EXCELLENT**
Symmetry **EXCELLENT**
Fluorescence **NONE**
Inscription(s) **IGI LG795666520**
Comments: This Laboratory Grown Diamond was created by Chemical Vapor Deposition (CVD) growth process.
Type IIa



April 28, 2026
IGI Report No. **LG795666520**
MODIFIED OCTAGON STEP CUT
8.90 X 5.25 X 3.39 MM
Carat Weight **1.49 CARAT**
Color Grade **D**
Clarity Grade **VVS 2**
Depth **64.6%**
Table **67%**
Girdle **Medium to Slightly Thick**
Culet **Long**
Polish **EXCELLENT**
Symmetry **EXCELLENT**
Fluorescence **NONE**
Inscription(s) **IGI LG795666520**
Comments: This Laboratory Grown Diamond was created by Chemical Vapor Deposition (CVD) growth process.
Type IIa