



ELECTRONIC COPY

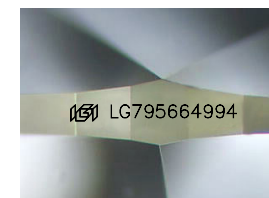
LG795664994
Report verification at igi.org



April 27, 2026
IGI Report Number **LG795664994**
Description **LABORATORY GROWN DIAMOND**

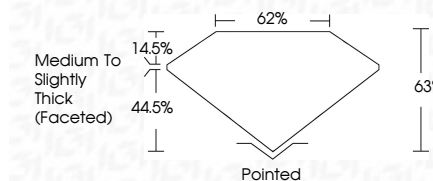
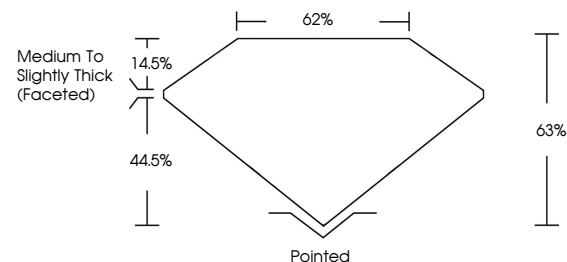
Shape and Cutting Style **OVAL BRILLIANT**
Measurements **10.68 X 7.70 X 4.85 MM**

GRADING RESULTS
Carat Weight **2.57 CARATS**
Color Grade **G**
Clarity Grade **VVS 2**

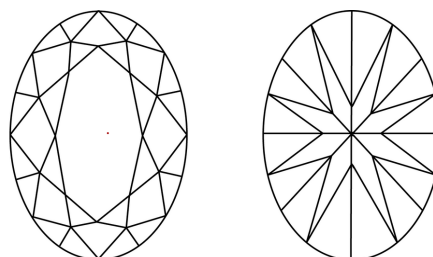


Sample Image Used

PROPORTIONS



CLARITY CHARACTERISTICS



KEY TO SYMBOLS

Red symbols indicate internal characteristics.
Green symbols indicate external characteristics.

COLOR

D E F G H I J Faint Very Light Light

CLARITY

FL	IF	VS ¹⁻²	VS ¹⁻²	SI ¹⁻²	I ¹⁻³
Flawless	Internally Flawless	Very Very Slightly Included	Very Slightly Included	Slightly Included	Included

ADDITIONAL GRADING INFORMATION

Polish **EXCELLENT**
Symmetry **EXCELLENT**
Fluorescence **NONE**
Inscription(s) **IGI LG795664994**
Comments: This Laboratory Grown Diamond was created by Chemical Vapor Deposition (CVD) growth process. Type IIa



April 27, 2026
IGI Report No LG795664994
OVAL BRILLIANT
10.68 X 7.70 X 4.85 MM
Carat Weight **2.57 CARATS**
Color Grade **G**
Clarity Grade **VVS 2**
Depth **63%**
Table **62%**
Girdle **Medium to Slightly Thick (Faceted)**
Culet **Pointed**
Polish **EXCELLENT**
Symmetry **EXCELLENT**
Fluorescence **NONE**
Inscription(s) **IGI LG795664994**
Comments: This Laboratory Grown Diamond was created by Chemical Vapor Deposition (CVD) growth process. Type IIa