



**ELECTRONIC COPY**

LG795664801  
Report verification at [igi.org](http://igi.org)



April 28, 2026  
IGI Report Number **LG795664801**  
Description **LABORATORY GROWN DIAMOND**  
Shape and Cutting Style **CUSHION MODIFIED BRILLIANT**  
Measurements **12.25 X 8.87 X 5.86 MM**  
**GRADING RESULTS**  
Carat Weight **5.06 CARATS**  
Color Grade **G**  
Clarity Grade **VVS 2**

**LABORATORY GROWN DIAMOND REPORT**

April 28, 2026  
IGI Report Number **LG795664801**  
Description **LABORATORY GROWN DIAMOND**  
Shape and Cutting Style **CUSHION MODIFIED BRILLIANT**  
Measurements **12.25 X 8.87 X 5.86 MM**

**GRADING RESULTS**

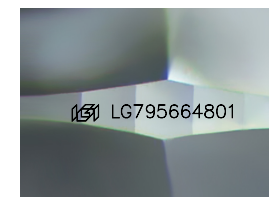
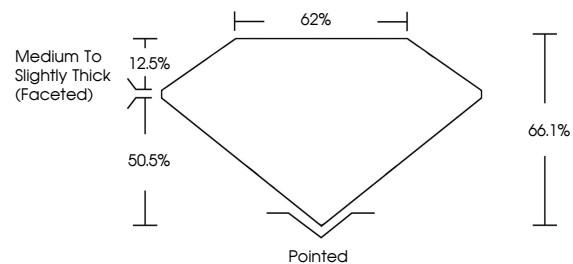
Carat Weight **5.06 CARATS**  
Color Grade **G**  
Clarity Grade **VVS 2**

**ADDITIONAL GRADING INFORMATION**

Polish **EXCELLENT**  
Symmetry **EXCELLENT**  
Fluorescence **NONE**  
Inscription(s) **IGI LG795664801**

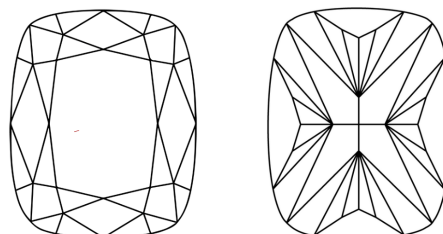
Comments: This Laboratory Grown Diamond was created by Chemical Vapor Deposition (CVD) growth process. Type IIa

**PROPORTIONS**



Sample Image Used

**CLARITY CHARACTERISTICS**



**KEY TO SYMBOLS**

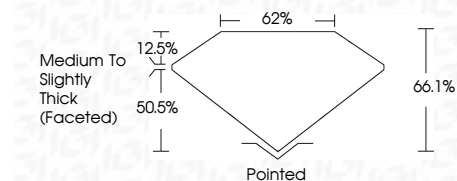
Red symbols indicate internal characteristics.  
Green symbols indicate external characteristics.

**COLOR**

D E F G H I J Faint Very Light Light

**CLARITY**

FL	IF	VVS <sup>1-2</sup>	VS <sup>1-2</sup>	SI <sup>1-2</sup>	I <sup>1-3</sup>
Flawless	Internally Flawless	Very Very Slightly Included	Very Slightly Included	Slightly Included	Included



**ADDITIONAL GRADING INFORMATION**

Polish **EXCELLENT**  
Symmetry **EXCELLENT**  
Fluorescence **NONE**  
Inscription(s) **IGI LG795664801**  
Comments: This Laboratory Grown Diamond was created by Chemical Vapor Deposition (CVD) growth process. Type IIa



April 28, 2026  
IGI Report No **LG795664801**  
**CUSHION MODIFIED BRILLIANT**  
**5.06 CARATS**  
**G**  
**VVS 2**  
**66.1%**  
**62%**  
**Medium to Slightly Thick (Faceted)**  
**Pointed**  
**EXCELLENT**  
**EXCELLENT**  
**NONE**  
**IGI LG795664801**  
Comments: This Laboratory Grown Diamond was created by Chemical Vapor Deposition (CVD) growth process. Type IIa