



ELECTRONIC COPY

LG795664517
Report verification at igi.org



May 2, 2026
IGI Report Number **LG795664517**
Description **LABORATORY GROWN DIAMOND**
Shape and Cutting Style **CUSHION MODIFIED BRILLIANT**
Measurements **10.77 X 8.74 X 6.01 MM**
GRADING RESULTS
Carat Weight **5.05 CARATS**
Color Grade **FANCY VIVID YELLOW**
Clarity Grade **VVS 2**

May 2, 2026
IGI Report Number **LG795664517**
Description **LABORATORY GROWN DIAMOND**
Shape and Cutting Style **CUSHION MODIFIED BRILLIANT**
Measurements **10.77 X 8.74 X 6.01 MM**

GRADING RESULTS

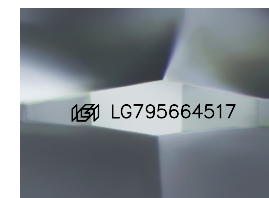
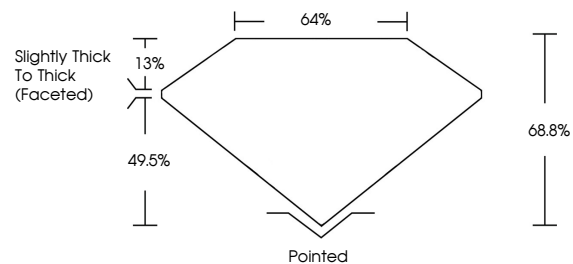
Carat Weight **5.05 CARATS**
Color Grade **FANCY VIVID YELLOW**
Clarity Grade **VVS 2**

ADDITIONAL GRADING INFORMATION

Polish **EXCELLENT**
Symmetry **EXCELLENT**
Fluorescence **NONE**
Inscription(s) **IGI LG795664517**

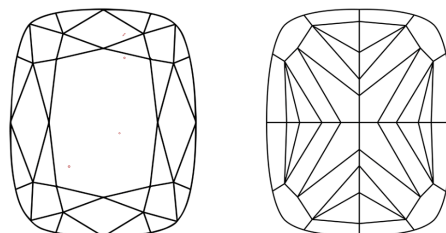
Comments: This Laboratory Grown Diamond was created by Chemical Vapor Deposition (CVD) growth process.

PROPORTIONS



Sample Image Used

CLARITY CHARACTERISTICS



KEY TO SYMBOLS

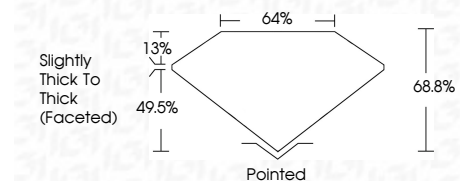
Red symbols indicate internal characteristics.
Green symbols indicate external characteristics.

COLOR

D E F G H I J Faint Very Light Light

CLARITY

FL	IF	VVS ¹⁻²	VS ¹⁻²	SI ¹⁻²	I ¹⁻³
Flawless	Internally Flawless	Very Very Slightly Included	Very Slightly Included	Slightly Included	Included



ADDITIONAL GRADING INFORMATION

Polish **EXCELLENT**
Symmetry **EXCELLENT**
Fluorescence **NONE**
Inscription(s) **IGI LG795664517**
Comments: This Laboratory Grown Diamond was created by Chemical Vapor Deposition (CVD) growth process.



IGI



May 2, 2026
IGI Report No **LG795664517**
CUSHION MODIFIED BRILLIANT
10.77 X 8.74 X 6.01 MM
Carat Weight **5.05 CARATS**
Color Grade **FANCY VIVID YELLOW**
Clarity Grade **VVS 2**
Depth **68.8%**
Table **64%**
Girdle **Slightly Thick To Thick (Faceted)**
Culet **Pointed**
Polish **EXCELLENT**
Symmetry **EXCELLENT**
Fluorescence **NONE**
Inscription(s) **IGI LG795664517**

Comments: This Laboratory Grown Diamond was created by Chemical Vapor Deposition (CVD) growth process.