



ELECTRONIC COPY

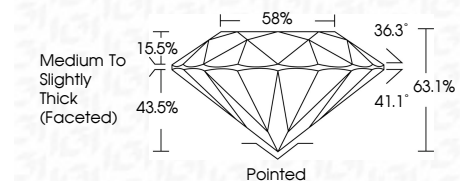
LG795657611
Report verification at igi.org



April 30, 2026
IGI Report Number LG795657611
Description LABORATORY GROWN DIAMOND
Shape and Cutting Style ROUND BRILLIANT
Measurements 6.48 - 6.52 X 4.10 MM

GRADING RESULTS

Carat Weight 1.08 CARAT
Color Grade F
Clarity Grade VVS 2
Cut Grade EXCELLENT



ADDITIONAL GRADING INFORMATION

Polish EXCELLENT
Symmetry EXCELLENT
Fluorescence NONE
Inscription(s) IGI LG795657611
Comments: This Laboratory Grown Diamond was created by Chemical Vapor Deposition (CVD) growth process. Type IIa



April 30, 2026
IGI Report No LG795657611
ROUND BRILLIANT
1.08 CARAT F
6.48 - 6.52 X 4.10 MM
Carat Weight
Color Grade EXCELLENT
Clarity Grade VVS 2
Cut Grade EXCELLENT
Depth 63.1%
Table 58%
Girdle Medium To Slightly Thick (Faceted)
Culet Pointed
Polish EXCELLENT
Symmetry EXCELLENT
Fluorescence NONE
Inscription(s) IGI LG795657611
Comments: This Laboratory Grown Diamond was created by Chemical Vapor Deposition (CVD) growth process. Type IIa

April 30, 2026
IGI Report Number LG795657611
Description LABORATORY GROWN DIAMOND
Shape and Cutting Style ROUND BRILLIANT
Measurements 6.48 - 6.52 X 4.10 MM

GRADING RESULTS

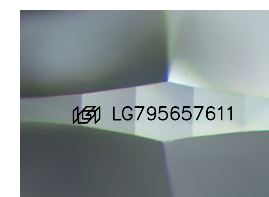
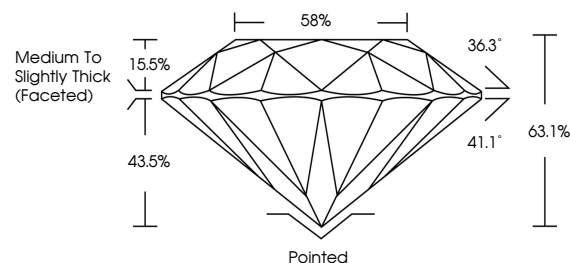
Carat Weight 1.08 CARAT
Color Grade F
Clarity Grade VVS 2
Cut Grade EXCELLENT

ADDITIONAL GRADING INFORMATION

Polish EXCELLENT
Symmetry EXCELLENT
Fluorescence NONE
Inscription(s) IGI LG795657611

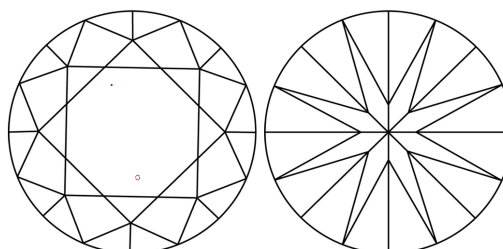
Comments: This Laboratory Grown Diamond was created by Chemical Vapor Deposition (CVD) growth process. Type IIa

PROPORTIONS



Sample Image Used

CLARITY CHARACTERISTICS



KEY TO SYMBOLS

Red symbols indicate internal characteristics.
Green symbols indicate external characteristics.

COLOR

D E F G H I J Faint Very Light Light

CLARITY

FL IF VVS 1-2 VS 1-2 SI 1-2 I 1-3
Flawless Internally Flawless Very Very Slightly Included Very Slightly Included Slightly Included Included

