



ELECTRONIC COPY

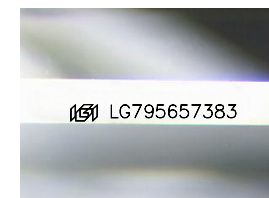
LG795657383
Report verification at igi.org



April 25, 2026
IGI Report Number **LG795657383**
Description **LABORATORY GROWN DIAMOND**

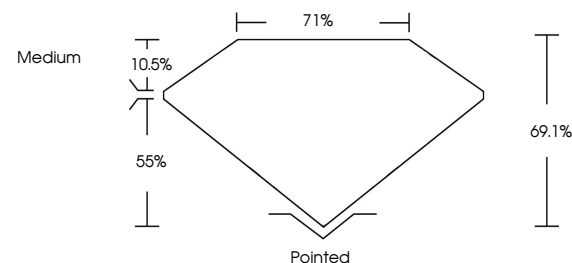
Shape and Cutting Style **PRINCESS CUT**
Measurements **7.37 X 7.22 X 4.99 MM**

GRADING RESULTS
Carat Weight **2.34 CARATS**
Color Grade **E**
Clarity Grade **VVS 2**

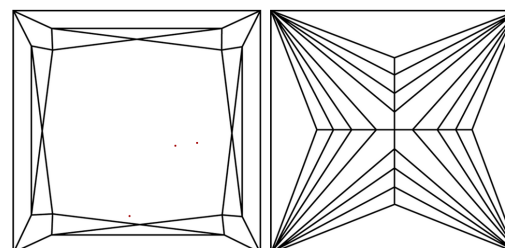


Sample Image Used

PROPORTIONS



CLARITY CHARACTERISTICS



KEY TO SYMBOLS

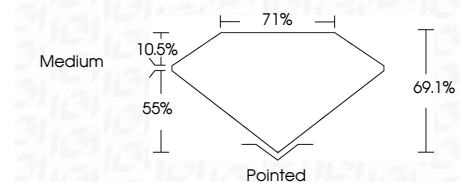
Red symbols indicate internal characteristics.
Green symbols indicate external characteristics.

COLOR

D E F G H I J Faint Very Light Light

CLARITY

FL	IF	VVS ¹⁻²	VS ¹⁻²	SI ¹⁻²	I ¹⁻³
Flawless	Internally Flawless	Very Very Slightly Included	Very Slightly Included	Slightly Included	Included



ADDITIONAL GRADING INFORMATION

Polish **EXCELLENT**
Symmetry **EXCELLENT**
Fluorescence **NONE**
Inscription(s) **IGI LG795657383**
Comments: This Laboratory Grown Diamond was created by Chemical Vapor Deposition (CVD) growth process. Type IIa



IGI



April 25, 2026
IGI Report No. LG795657383
PRINCESS CUT
7.37 X 7.22 X 4.99 MM
2.34 CARATS
E
VVS 2
69.1%
71%
Medium
Pointed
EXCELLENT
EXCELLENT
NONE
IGI LG795657383
Comments: This Laboratory Grown Diamond was created by Chemical Vapor Deposition (CVD) growth process. Type IIa