



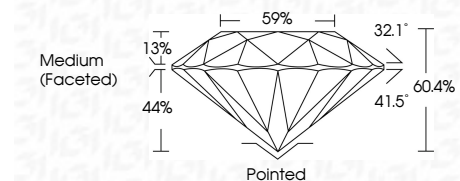
ELECTRONIC COPY

LG795654771
Report verification at igi.org



April 25, 2026
IGI Report Number **LG795654771**
Description **LABORATORY GROWN DIAMOND**
Shape and Cutting Style **ROUND BRILLIANT**
Measurements **6.49 - 6.52 X 3.93 MM**

GRADING RESULTS
Carat Weight **1.01 CARAT**
Color Grade **F**
Clarity Grade **VVS 2**
Cut Grade **EXCELLENT**



ADDITIONAL GRADING INFORMATION
Polish **EXCELLENT**
Symmetry **EXCELLENT**
Fluorescence **NONE**
Inscription(s) **IGI LG795654771**
Comments: This Laboratory Grown Diamond was created by Chemical Vapor Deposition (CVD) growth process. Type IIa



April 25, 2026
IGI Report No LG795654771
ROUND BRILLIANT
6.49 - 6.52 X 3.93 MM
1.01 CARAT
F
VVS 2
EXCELLENT
60.4%
59%
Medium (Faceted)
Pointed
EXCELLENT
EXCELLENT
NONE
IGI LG795654771
Comments: This Laboratory Grown Diamond was created by Chemical Vapor Deposition (CVD) growth process. Type IIa

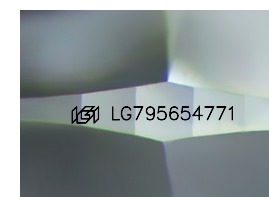
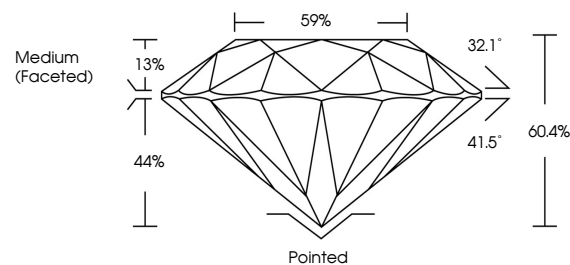
April 25, 2026
IGI Report Number **LG795654771**
Description **LABORATORY GROWN DIAMOND**
Shape and Cutting Style **ROUND BRILLIANT**
Measurements **6.49 - 6.52 X 3.93 MM**

GRADING RESULTS
Carat Weight **1.01 CARAT**
Color Grade **F**
Clarity Grade **VVS 2**
Cut Grade **EXCELLENT**

ADDITIONAL GRADING INFORMATION
Polish **EXCELLENT**
Symmetry **EXCELLENT**
Fluorescence **NONE**
Inscription(s) **IGI LG795654771**

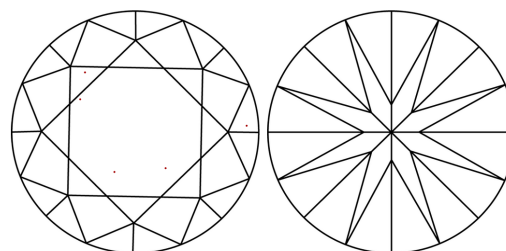
Comments: This Laboratory Grown Diamond was created by Chemical Vapor Deposition (CVD) growth process. Type IIa

PROPORTIONS



Sample Image Used

CLARITY CHARACTERISTICS



KEY TO SYMBOLS

Red symbols indicate internal characteristics.
Green symbols indicate external characteristics.

COLOR

D E F G H I J Faint Very Light Light

CLARITY

FL	IF	VVS ¹⁻²	VS ¹⁻²	SI ¹⁻²	I ¹⁻³
Flawless	Internally Flawless	Very Very Slightly Included	Very Slightly Included	Slightly Included	Included

