



**ELECTRONIC COPY**

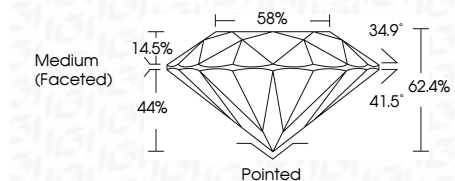
LG795654486  
Report verification at igi.org



April 24, 2026  
IGI Report Number **LG795654486**  
Description **LABORATORY GROWN DIAMOND**  
Shape and Cutting Style **ROUND BRILLIANT**  
Measurements **6.38 - 6.42 X 4.00 MM**

**GRADING RESULTS**

Carat Weight **1.00 CARAT**  
Color Grade **F**  
Clarity Grade **VS 2**  
Cut Grade **IDEAL**



**ADDITIONAL GRADING INFORMATION**

Polish **EXCELLENT**  
Symmetry **EXCELLENT**  
Fluorescence **NONE**  
Inscription(s) **IGI LG795654486**  
Comments: This Laboratory Grown Diamond was created by Chemical Vapor Deposition (CVD) growth process. Type IIa



April 24, 2026  
IGI Report No LG795654486  
**ROUND BRILLIANT**  
6.38 - 6.42 X 4.00 MM  
1.00 CARAT  
F  
VS 2  
IDEAL  
62.4%  
58%  
Medium (Faceted)  
Pointed  
EXCELLENT  
EXCELLENT  
NONE  
IGI LG795654486  
Comments: This Laboratory Grown Diamond was created by Chemical Vapor Deposition (CVD) growth process. Type IIa

April 24, 2026  
IGI Report Number **LG795654486**  
Description **LABORATORY GROWN DIAMOND**  
Shape and Cutting Style **ROUND BRILLIANT**  
Measurements **6.38 - 6.42 X 4.00 MM**

**GRADING RESULTS**

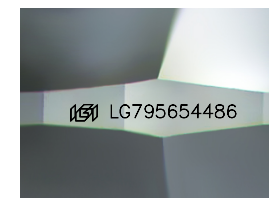
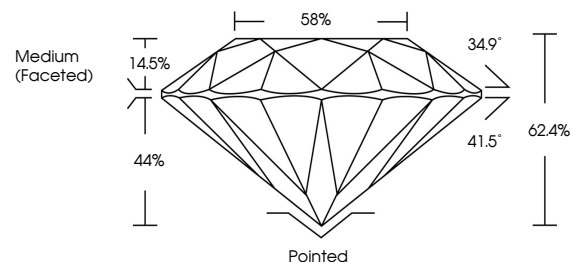
Carat Weight **1.00 CARAT**  
Color Grade **F**  
Clarity Grade **VS 2**  
Cut Grade **IDEAL**

**ADDITIONAL GRADING INFORMATION**

Polish **EXCELLENT**  
Symmetry **EXCELLENT**  
Fluorescence **NONE**  
Inscription(s) **IGI LG795654486**

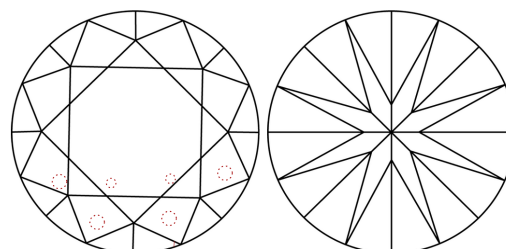
Comments: This Laboratory Grown Diamond was created by Chemical Vapor Deposition (CVD) growth process. Type IIa

**PROPORTIONS**



Sample Image Used

**CLARITY CHARACTERISTICS**



**KEY TO SYMBOLS**

Red symbols indicate internal characteristics.  
Green symbols indicate external characteristics.

**COLOR**

D E F G H I J Faint Very Light Light

**CLARITY**

FL	IF	VS <sup>1-2</sup>	VS <sup>1-2</sup>	SI <sup>1-2</sup>	I <sup>1-3</sup>
Flawless	Internally Flawless	Very Very Slightly Included	Very Slightly Included	Slightly Included	Included

