



**INTERNATIONAL  
GEMOLOGICAL  
INSTITUTE**

**ELECTRONIC COPY**



May 1, 2026

**IGI Report Number LG795654457**  
**ROUND BRILLIANT**  
**LABORATORY GROWN DIAMOND**  
**5.89 - 5.91 X 3.71 MM**

**0.80 CARAT**  
**Color Grade FANCY LIGHT PINK**  
**Clarity Grade VS 1**  
**Cut Grade EXCELLENT**  
**Polish EXCELLENT**  
**Symmetry EXCELLENT**  
**Fluorescence SLIGHT**  
**Inscription(s) IGI LG795654457**

Comments: This Laboratory Grown Diamond was created by Chemical Vapor Deposition (CVD) growth process. Indications of post-growth treatment.

**LABORATORY GROWN DIAMOND REPORT**

May 1, 2026  
IGI Report Number **LG795654457**  
Description **LABORATORY GROWN DIAMOND**  
Shape and Cutting Style **ROUND BRILLIANT**  
Measurements **5.89 - 5.91 X 3.71 MM**

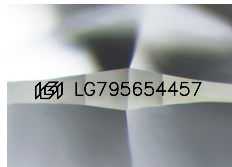
**GRADING RESULTS**

Carat Weight **0.80 CARAT**  
Color Grade **FANCY LIGHT PINK**  
Clarity Grade **VS 1**  
Cut Grade **EXCELLENT**

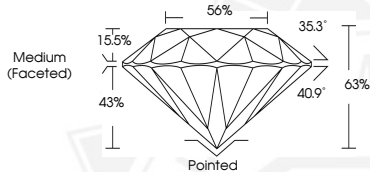
**ADDITIONAL GRADING INFORMATION**

Polish **EXCELLENT**  
Symmetry **EXCELLENT**  
Fluorescence **SLIGHT**  
Inscription(s) **IGI LG795654457**

Comments: This Laboratory Grown Diamond was created by Chemical Vapor Deposition (CVD) growth process. Indications of post-growth treatment.



Sample Image Used



May 1, 2026

**IGI Report Number LG795654457**  
**ROUND BRILLIANT**  
**LABORATORY GROWN DIAMOND**  
**5.89 - 5.91 X 3.71 MM**

**0.80 CARAT**  
**Color Grade FANCY LIGHT PINK**  
**Clarity Grade VS 1**  
**Cut Grade EXCELLENT**  
**Polish EXCELLENT**  
**Symmetry EXCELLENT**  
**Fluorescence SLIGHT**  
**Inscription(s) IGI LG795654457**

Comments: This Laboratory Grown Diamond was created by Chemical Vapor Deposition (CVD) growth process. Indications of post-growth treatment.



THIS DOCUMENT WAS PRODUCED WITH THE FOLLOWING SECURITY MEASURES: SPECIAL DOCUMENT PAPER, INK SCREENS, WATERMARK, BACKGROUND DESIGNS, HOLOGRAM AND OTHER SECURITY FEATURES NOT LISTED AND DO EXCEED DOCUMENT SECURITY INDUSTRY GUIDELINES.

For terms & conditions and to verify this report, please visit [www.igi.org](http://www.igi.org)