



ELECTRONIC COPY

LG795653200
Report verification at igi.org



April 28, 2026

IGI Report Number **LG795653200**

Description **LABORATORY GROWN DIAMOND**

Shape and Cutting Style **ROUND BRILLIANT**

Measurements **7.21 - 7.25 X 4.30 MM**

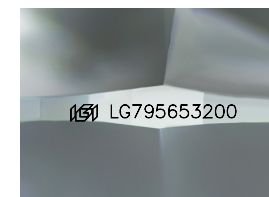
GRADING RESULTS

Carat Weight **1.36 CARAT**

Color Grade **E**

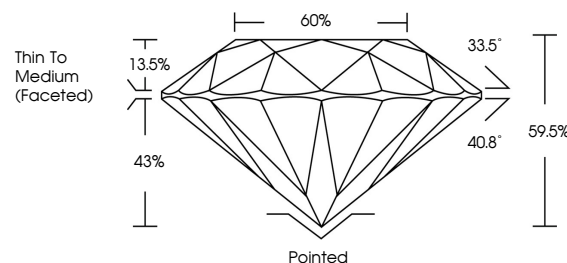
Clarity Grade **VS 2**

Cut Grade **IDEAL**

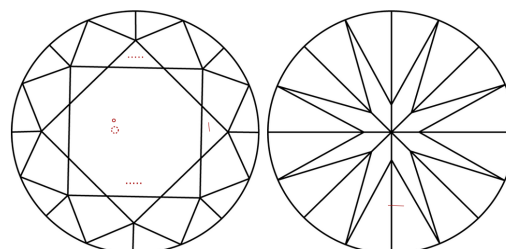


Sample Image Used

PROPORTIONS



CLARITY CHARACTERISTICS



KEY TO SYMBOLS

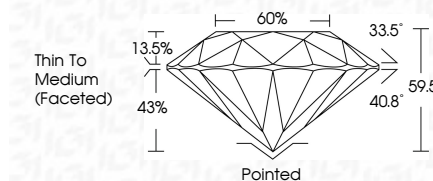
Red symbols indicate internal characteristics.
Green symbols indicate external characteristics.

COLOR

D E F G H I J Faint Very Light Light

CLARITY

FL	IF	VS ¹⁻²	VS ¹⁻²	SI ¹⁻²	I ¹⁻³
Flawless	Internally Flawless	Very Very Slightly Included	Very Slightly Included	Slightly Included	Included



ADDITIONAL GRADING INFORMATION

Polish **EXCELLENT**

Symmetry **EXCELLENT**

Fluorescence **NONE**

Inscription(s) **IGI LG795653200**

Comments: This Laboratory Grown Diamond was created by Chemical Vapor Deposition (CVD) growth process. Type IIa



IGI



April 28, 2026
IGI Report No LG795653200
ROUND BRILLIANT

1.36 CARAT
E

7.21 - 7.25 X 4.30 MM
VS 2
IDEAL
59.5%
60%

Thin To Medium (Faceted)
Pointed
EXCELLENT
EXCELLENT
NONE
NONE

IGI LG795653200

Comments: This Laboratory Grown Diamond was created by Chemical Vapor Deposition (CVD) growth process. Type IIa