



**ELECTRONIC COPY**

LG795653127  
Report verification at igi.org



April 28, 2026

IGI Report Number **LG795653127**

Description **LABORATORY GROWN DIAMOND**

Shape and Cutting Style **ROUND BRILLIANT**

Measurements **7.29 - 7.35 X 4.63 MM**

**GRADING RESULTS**

Carat Weight **1.52 CARAT**

Color Grade **F**

Clarity Grade **VS 2**

Cut Grade **EXCELLENT**

April 28, 2026  
IGI Report Number **LG795653127**  
Description **LABORATORY GROWN DIAMOND**  
Shape and Cutting Style **ROUND BRILLIANT**  
Measurements **7.29 - 7.35 X 4.63 MM**

**GRADING RESULTS**

Carat Weight **1.52 CARAT**

Color Grade **F**

Clarity Grade **VS 2**

Cut Grade **EXCELLENT**

**ADDITIONAL GRADING INFORMATION**

Polish **EXCELLENT**

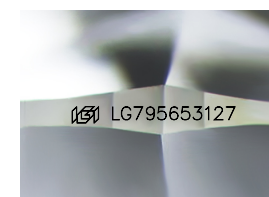
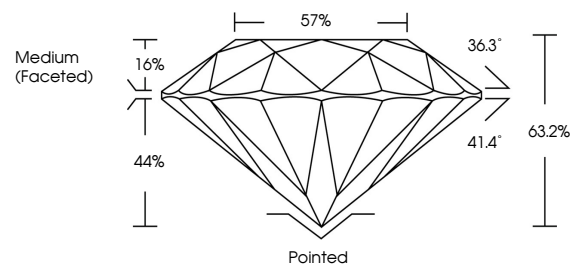
Symmetry **EXCELLENT**

Fluorescence **NONE**

Inscription(s) **IGI LG795653127**

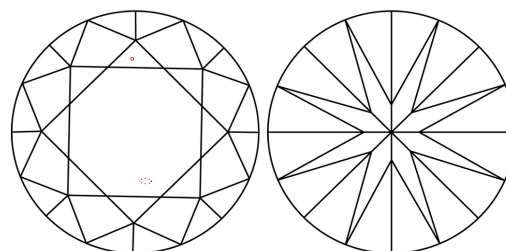
Comments: This Laboratory Grown Diamond was created by Chemical Vapor Deposition (CVD) growth process.  
Type IIa

**PROPORTIONS**



Sample Image Used

**CLARITY CHARACTERISTICS**



**KEY TO SYMBOLS**

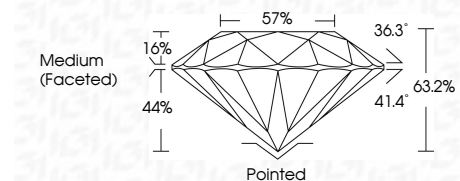
Red symbols indicate internal characteristics.  
Green symbols indicate external characteristics.

**COLOR**

D E F G H I J Faint Very Light Light

**CLARITY**

FL	IF	VS <sup>1-2</sup>	VS <sup>1-2</sup>	SI <sup>1-2</sup>	I <sup>1-3</sup>
Flawless	Internally Flawless	Very Very Slightly Included	Very Slightly Included	Slightly Included	Included



**ADDITIONAL GRADING INFORMATION**

Polish **EXCELLENT**

Symmetry **EXCELLENT**

Fluorescence **NONE**

Inscription(s) **IGI LG795653127**

Comments: This Laboratory Grown Diamond was created by Chemical Vapor Deposition (CVD) growth process.  
Type IIa



**IGI**



April 28, 2026  
IGI Report No LG795653127  
**ROUND BRILLIANT**  
7.29 - 7.35 X 4.63 MM  
1.52 CARAT  
F  
VS 2  
EXCELLENT  
63.2%  
57%  
Medium (Faceted)Pointed  
EXCELLENT  
EXCELLENT  
NONE  
IGI LG795653127  
Comments: This Laboratory Grown Diamond was created by Chemical Vapor Deposition (CVD) growth process.  
Type IIa