



ELECTRONIC COPY

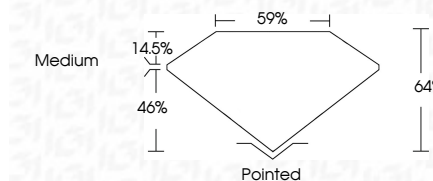
LG795650837
Report verification at igi.org



May 6, 2026
IGI Report Number **LG795650837**
Description **LABORATORY GROWN DIAMOND**
Shape and Cutting Style **HEXAGONAL STEP CUT**
Measurements **8.37 X 7.27 X 4.65 MM**

GRADING RESULTS

Carat Weight **2.05 CARATS**
Color Grade **D**
Clarity Grade **VVS 2**



ADDITIONAL GRADING INFORMATION

Polish **EXCELLENT**
Symmetry **EXCELLENT**
Fluorescence **NONE**
Inscription(s) **IGI LG795650837**
Comments: This Laboratory Grown Diamond was created by Chemical Vapor Deposition (CVD) growth process. Type IIa



May 6, 2026
IGI Report No LG795650837
HEXAGONAL STEP CUT
8.37 X 7.27 X 4.65 MM
Carat Weight **2.05 CARATS**
Color Grade **D**
Clarity Grade **VVS 2**
Depth **46%**
Table **59%**
Girdle **Medium**
Culet **Pointed**
Polish **EXCELLENT**
Symmetry **EXCELLENT**
Fluorescence **NONE**
Inscription(s) **IGI LG795650837**
Comments: This Laboratory Grown Diamond was created by Chemical Vapor Deposition (CVD) growth process. Type IIa

LABORATORY GROWN DIAMOND REPORT

May 6, 2026
IGI Report Number **LG795650837**
Description **LABORATORY GROWN DIAMOND**
Shape and Cutting Style **HEXAGONAL STEP CUT**
Measurements **8.37 X 7.27 X 4.65 MM**

GRADING RESULTS

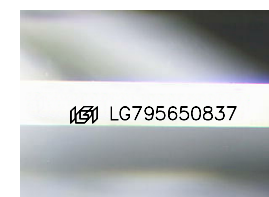
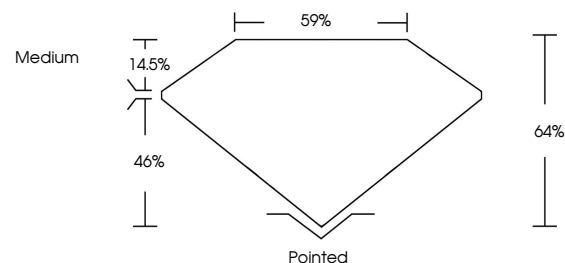
Carat Weight **2.05 CARATS**
Color Grade **D**
Clarity Grade **VVS 2**

ADDITIONAL GRADING INFORMATION

Polish **EXCELLENT**
Symmetry **EXCELLENT**
Fluorescence **NONE**
Inscription(s) **IGI LG795650837**

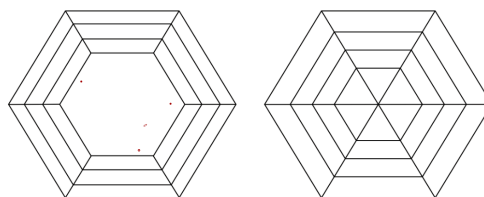
Comments: This Laboratory Grown Diamond was created by Chemical Vapor Deposition (CVD) growth process. Type IIa

PROPORTIONS



Sample Image Used

CLARITY CHARACTERISTICS



KEY TO SYMBOLS

Red symbols indicate internal characteristics.
Green symbols indicate external characteristics.

COLOR

D E F G H I J Faint Very Light Light

CLARITY

FL	IF	VVS ¹⁻²	VS ¹⁻²	SI ¹⁻²	I ¹⁻³
Flawless	Internally Flawless	Very Very Slightly Included	Very Slightly Included	Slightly Included	Included