



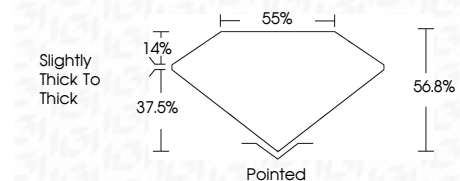
ELECTRONIC COPY

LG795650512
Report verification at igi.org



May 6, 2026
IGI Report Number **LG795650512**
Description **LABORATORY GROWN DIAMOND**
Shape and Cutting Style **PENTAGONAL STEP CUT**
Measurements **7.90 X 8.27 X 4.70 MM**

GRADING RESULTS
Carat Weight **2.05 CARATS**
Color Grade **E**
Clarity Grade **VS 1**



ADDITIONAL GRADING INFORMATION
Polish **EXCELLENT**
Symmetry **EXCELLENT**
Fluorescence **NONE**
Inscription(s) **IGI LG795650512**
Comments: This Laboratory Grown Diamond was created by Chemical Vapor Deposition (CVD) growth process. Type IIa



May 6, 2026
IGI Report No **LG795650512**
PENTAGONAL STEP CUT
7.90 X 8.27 X 4.70 MM
2.05 CARATS
E
VS 1
56.8%
37.5%
14%
Slightly thick to thick
Pointed
EXCELLENT
EXCELLENT
NONE
IGI LG795650512
Comments: This Laboratory Grown Diamond was created by Chemical Vapor Deposition (CVD) growth process. Type IIa

LABORATORY GROWN DIAMOND REPORT

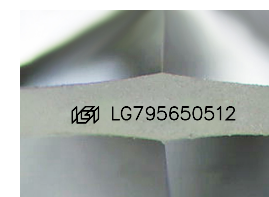
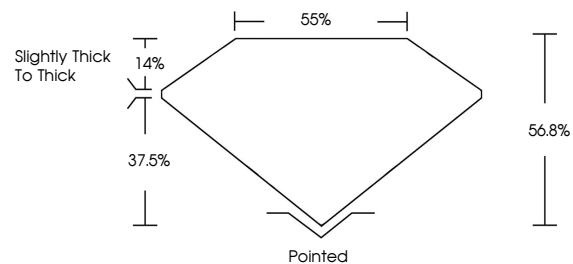
May 6, 2026
IGI Report Number **LG795650512**
Description **LABORATORY GROWN DIAMOND**
Shape and Cutting Style **PENTAGONAL STEP CUT**
Measurements **7.90 X 8.27 X 4.70 MM**

GRADING RESULTS
Carat Weight **2.05 CARATS**
Color Grade **E**
Clarity Grade **VS 1**

ADDITIONAL GRADING INFORMATION
Polish **EXCELLENT**
Symmetry **EXCELLENT**
Fluorescence **NONE**
Inscription(s) **IGI LG795650512**

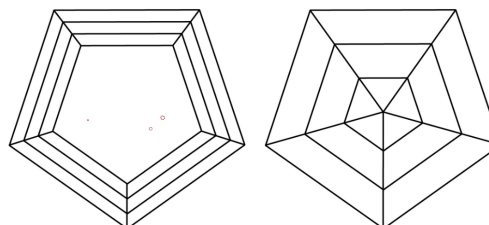
Comments: This Laboratory Grown Diamond was created by Chemical Vapor Deposition (CVD) growth process. Type IIa

PROPORTIONS



Sample Image Used

CLARITY CHARACTERISTICS



KEY TO SYMBOLS

Red symbols indicate internal characteristics.
Green symbols indicate external characteristics.

COLOR

D E F G H I J Faint Very Light Light

CLARITY

| FL | IF | VS ¹⁻² | VS ¹⁻² | SI ¹⁻² | I ¹⁻³ |
|----------|---------------------|-----------------------------|------------------------|-------------------|------------------|
| Flawless | Internally Flawless | Very Very Slightly Included | Very Slightly Included | Slightly Included | Included |

