



**ELECTRONIC COPY**

LG795650344  
Report verification at igi.org



May 19, 2026  
IGI Report Number **LG795650344**  
Description **LABORATORY GROWN DIAMOND**  
Shape and Cutting Style **MODIFIED PENTAGONAL STEP CUT**  
Measurements **9.34 X 6.27 X 2.61 MM**  
**GRADING RESULTS**  
Carat Weight **1.02 CARAT**  
Color Grade **E**  
Clarity Grade **VS 1**

**LABORATORY GROWN DIAMOND REPORT**

May 19, 2026  
IGI Report Number **LG795650344**  
Description **LABORATORY GROWN DIAMOND**  
Shape and Cutting Style **MODIFIED PENTAGONAL STEP CUT**  
Measurements **9.34 X 6.27 X 2.61 MM**

**GRADING RESULTS**

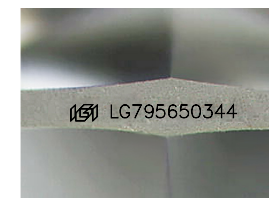
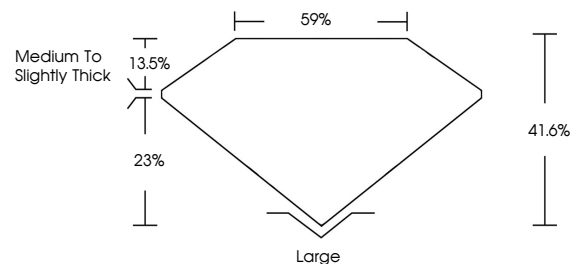
Carat Weight **1.02 CARAT**  
Color Grade **E**  
Clarity Grade **VS 1**

**ADDITIONAL GRADING INFORMATION**

Polish **EXCELLENT**  
Symmetry **EXCELLENT**  
Fluorescence **NONE**  
Inscription(s) **IGI LG795650344**

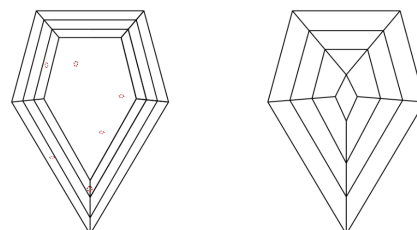
Comments: This Laboratory Grown Diamond was created by Chemical Vapor Deposition (CVD) growth process.  
Type IIa

**PROPORTIONS**



Sample Image Used

**CLARITY CHARACTERISTICS**



**KEY TO SYMBOLS**

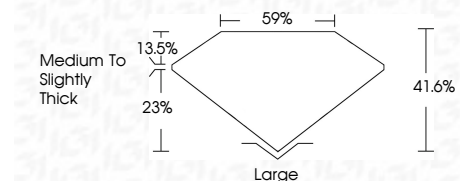
Red symbols indicate internal characteristics.  
Green symbols indicate external characteristics.

**COLOR**

D E F G H I J Faint Very Light Light

**CLARITY**

FL	IF	VS <sup>1-2</sup>	VS <sup>1-2</sup>	SI <sup>1-2</sup>	I <sup>1-3</sup>
Flawless	Internally Flawless	Very Very Slightly Included	Very Slightly Included	Slightly Included	Included



**ADDITIONAL GRADING INFORMATION**

Polish **EXCELLENT**  
Symmetry **EXCELLENT**  
Fluorescence **NONE**  
Inscription(s) **IGI LG795650344**  
Comments: This Laboratory Grown Diamond was created by Chemical Vapor Deposition (CVD) growth process.  
Type IIa



May 19, 2026  
IGI Report No LG795650344  
MODIFIED PENTAGONAL STEP CUT  
9.34 X 6.27 X 2.61 MM  
1.02 CARAT  
E  
VS 1  
41.6%  
23%  
59%  
Medium to Slightly Thick  
Large  
EXCELLENT  
EXCELLENT  
NONE  
IGI LG795650344  
Comments: This Laboratory Grown Diamond was created by Chemical Vapor Deposition (CVD) growth process.  
Type IIa