



ELECTRONIC COPY

LG795649982
Report verification at igi.org



May 8, 2026
IGI Report Number **LG795649982**
Description **LABORATORY GROWN DIAMOND**
Shape and Cutting Style **HEXAGONAL MODIFIED BRILLIANT**
Measurements **14.69 X 7.94 X 5.11 MM**
GRADING RESULTS
Carat Weight **3.68 CARATS**
Color Grade **D**
Clarity Grade **VVS 2**

May 8, 2026
IGI Report Number **LG795649982**
Description **LABORATORY GROWN DIAMOND**
Shape and Cutting Style **HEXAGONAL MODIFIED BRILLIANT**
Measurements **14.69 X 7.94 X 5.11 MM**

GRADING RESULTS

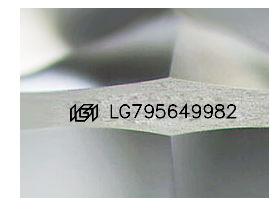
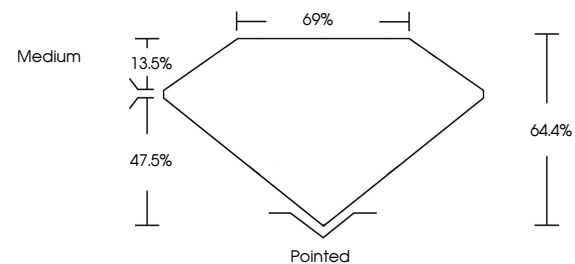
Carat Weight **3.68 CARATS**
Color Grade **D**
Clarity Grade **VVS 2**

ADDITIONAL GRADING INFORMATION

Polish **EXCELLENT**
Symmetry **EXCELLENT**
Fluorescence **NONE**
Inscription(s) **IGI LG795649982**

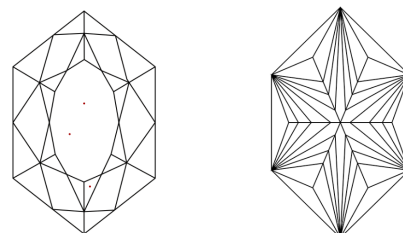
Comments: This Laboratory Grown Diamond was created by Chemical Vapor Deposition (CVD) growth process.
Type IIa

PROPORTIONS



Sample Image Used

CLARITY CHARACTERISTICS



KEY TO SYMBOLS

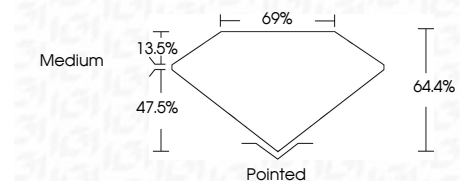
Red symbols indicate internal characteristics.
Green symbols indicate external characteristics.

COLOR

D E F G H I J Faint Very Light Light

CLARITY

FL	IF	VVS ¹⁻²	VS ¹⁻²	SI ¹⁻²	I ¹⁻³
Flawless	Internally Flawless	Very Very Slightly Included	Very Slightly Included	Slightly Included	Included



ADDITIONAL GRADING INFORMATION

Polish **EXCELLENT**
Symmetry **EXCELLENT**
Fluorescence **NONE**
Inscription(s) **IGI LG795649982**
Comments: This Laboratory Grown Diamond was created by Chemical Vapor Deposition (CVD) growth process.
Type IIa



May 8, 2026
IGI Report No LG795649982
HEXAGONAL MODIFIED BRILLIANT
14.69 X 7.94 X 5.11 MM
3.68 CARATS
D
VVS 2
64.4%
69%
Medium
Pointed
EXCELLENT
EXCELLENT
NONE
IGI LG795649982

Comments: This Laboratory Grown Diamond was created by Chemical Vapor Deposition (CVD) growth process.
Type IIa