



ELECTRONIC COPY

LG795649978
Report verification at igi.org



May 4, 2026
IGI Report Number LG795649978
Description LABORATORY GROWN DIAMOND
Shape and Cutting Style HEXAGONAL MODIFIED BRILLIANT
Measurements 13.75 X 7.50 X 4.90 MM
GRADING RESULTS
Carat Weight 3.09 CARATS
Color Grade E
Clarity Grade VVS 2

LABORATORY GROWN DIAMOND REPORT

May 4, 2026
IGI Report Number LG795649978
Description LABORATORY GROWN DIAMOND
Shape and Cutting Style HEXAGONAL MODIFIED BRILLIANT
Measurements 13.75 X 7.50 X 4.90 MM

GRADING RESULTS

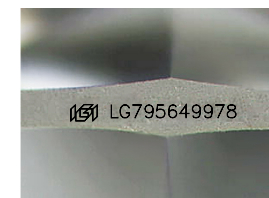
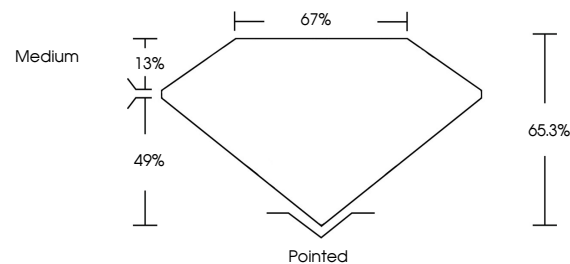
Carat Weight 3.09 CARATS
Color Grade E
Clarity Grade VVS 2

ADDITIONAL GRADING INFORMATION

Polish EXCELLENT
Symmetry EXCELLENT
Fluorescence NONE
Inscription(s) LG795649978

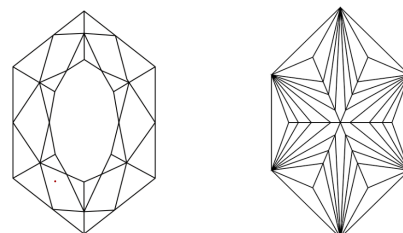
Comments: This Laboratory Grown Diamond was created by Chemical Vapor Deposition (CVD) growth process. Type IIa

PROPORTIONS



Sample Image Used

CLARITY CHARACTERISTICS



KEY TO SYMBOLS

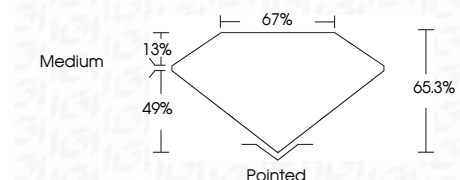
Red symbols indicate internal characteristics.
Green symbols indicate external characteristics.

COLOR

D E F G H I J Faint Very Light Light

CLARITY

Table with columns for clarity grades: FL, IF, VVS 1-2, VS 1-2, SI 1-2, I 1-3 and corresponding descriptions: Flawless, Internally Flawless, Very Very Slightly Included, Very Slightly Included, Slightly Included, Included



ADDITIONAL GRADING INFORMATION

Polish EXCELLENT
Symmetry EXCELLENT
Fluorescence NONE
Inscription(s) LG795649978
Comments: This Laboratory Grown Diamond was created by Chemical Vapor Deposition (CVD) growth process. Type IIa



May 4, 2026
IGI Report No LG795649978
HEXAGONAL MODIFIED BRILLIANT
3.09 CARATS E
Carat Weight 3.09 CARATS
Color Grade E
Clarity Grade VVS 2
Depth 65.3%
Table 49%
Girdle Medium
Culet Pointed
Polish EXCELLENT
Symmetry EXCELLENT
Fluorescence NONE
Inscription(s) LG795649978
Comments: This Laboratory Grown Diamond was created by Chemical Vapor Deposition (CVD) growth process. Type IIa