



**ELECTRONIC COPY**

LG795648099  
Report verification at igi.org



April 30, 2026  
IGI Report Number **LG795648099**  
Description **LABORATORY GROWN DIAMOND**  
Shape and Cutting Style **ROUND BRILLIANT**  
Measurements **9.24 - 9.29 X 5.71 MM**  
**GRADING RESULTS**  
Carat Weight **3.00 CARATS**  
Color Grade **FANCY INTENSE PINK**  
Clarity Grade **VVS 2**  
Cut Grade **IDEAL**

April 30, 2026  
IGI Report Number **LG795648099**  
Description **LABORATORY GROWN DIAMOND**  
Shape and Cutting Style **ROUND BRILLIANT**  
Measurements **9.24 - 9.29 X 5.71 MM**

**GRADING RESULTS**

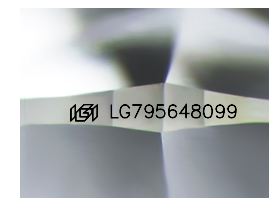
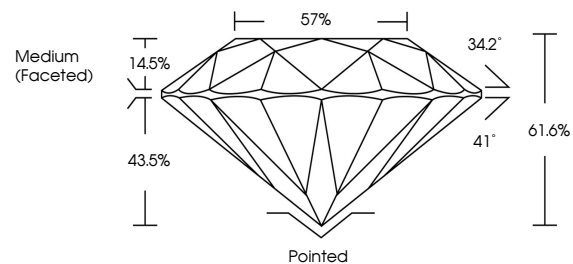
Carat Weight **3.00 CARATS**  
Color Grade **FANCY INTENSE PINK**  
Clarity Grade **VVS 2**  
Cut Grade **IDEAL**

**ADDITIONAL GRADING INFORMATION**

Polish **EXCELLENT**  
Symmetry **EXCELLENT**  
Fluorescence **SLIGHT**  
Inscription(s) **LG795648099**

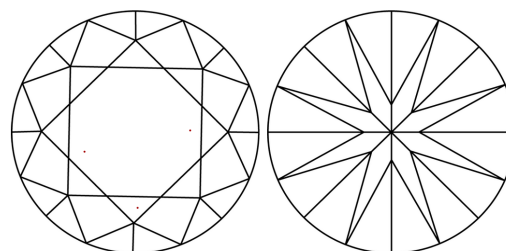
Comments: This Laboratory Grown Diamond was created by Chemical Vapor Deposition (CVD) growth process.  
Indications of post-growth treatment.

**PROPORTIONS**



Sample Image Used

**CLARITY CHARACTERISTICS**



**KEY TO SYMBOLS**

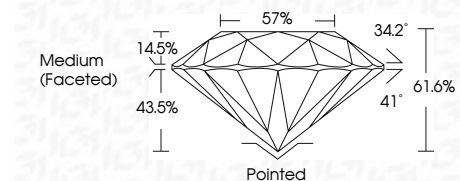
Red symbols indicate internal characteristics.  
Green symbols indicate external characteristics.

**COLOR**

D E F G H I J Faint Very Light Light

**CLARITY**

FL	IF	VVS <sup>1-2</sup>	VS <sup>1-2</sup>	SI <sup>1-2</sup>	I <sup>1-3</sup>
Flawless	Internally Flawless	Very Very Slightly Included	Very Slightly Included	Slightly Included	Included



**ADDITIONAL GRADING INFORMATION**

Polish **EXCELLENT**  
Symmetry **EXCELLENT**  
Fluorescence **SLIGHT**  
Inscription(s) **LG795648099**  
Comments: This Laboratory Grown Diamond was created by Chemical Vapor Deposition (CVD) growth process.  
Indications of post-growth treatment.



April 30, 2026  
IGI Report No **LG795648099**  
**ROUND BRILLIANT**  
**9.24 - 9.29 X 5.71 MM**  
**3.00 CARATS**  
**FANCY INTENSE PINK**  
**VVS 2**  
**IDEAL**  
**61.6%**  
**57%**  
**Medium (Faceted)**  
**Pointed**  
**EXCELLENT**  
**EXCELLENT**  
**SLIGHT**  
**SLIGHT**  
**IGI LG795648099**  
Comments: This Laboratory Grown Diamond was created by Chemical Vapor Deposition (CVD) growth process.  
Indications of post-growth treatment.