



**ELECTRONIC COPY**

LG795648069  
Report verification at igi.org



May 1, 2026  
IGI Report Number **LG795648069**  
Description **LABORATORY GROWN DIAMOND**  
Shape and Cutting Style **ROUND BRILLIANT**  
Measurements **8.11 - 8.13 X 5.04 MM**  
**GRADING RESULTS**  
Carat Weight **2.04 CARATS**  
Color Grade **FANCY INTENSE PINK**  
Clarity Grade **VVS 2**  
Cut Grade **IDEAL**

May 1, 2026  
IGI Report Number **LG795648069**  
Description **LABORATORY GROWN DIAMOND**  
Shape and Cutting Style **ROUND BRILLIANT**  
Measurements **8.11 - 8.13 X 5.04 MM**

**GRADING RESULTS**

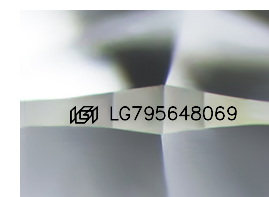
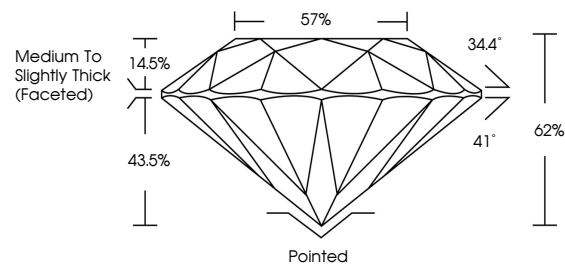
Carat Weight **2.04 CARATS**  
Color Grade **FANCY INTENSE PINK**  
Clarity Grade **VVS 2**  
Cut Grade **IDEAL**

**ADDITIONAL GRADING INFORMATION**

Polish **EXCELLENT**  
Symmetry **EXCELLENT**  
Fluorescence **SLIGHT**  
Inscription(s) **IGI LG795648069**

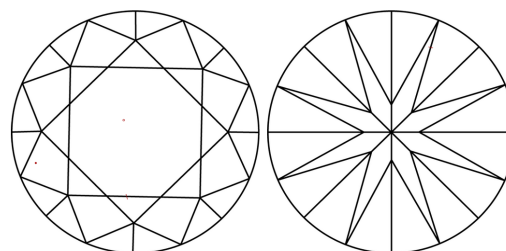
Comments: This Laboratory Grown Diamond was created by Chemical Vapor Deposition (CVD) growth process.  
Indications of post-growth treatment.

**PROPORTIONS**



Sample Image Used

**CLARITY CHARACTERISTICS**



**KEY TO SYMBOLS**

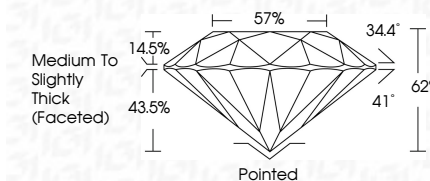
Red symbols indicate internal characteristics.  
Green symbols indicate external characteristics.

**COLOR**

D E F G H I J Faint Very Light Light

**CLARITY**

| FL       | IF                  | VVS <sup>1-2</sup>          | VS <sup>1-2</sup>      | SI <sup>1-2</sup> | I <sup>1-3</sup> |
|----------|---------------------|-----------------------------|------------------------|-------------------|------------------|
| Flawless | Internally Flawless | Very Very Slightly Included | Very Slightly Included | Slightly Included | Included         |



**ADDITIONAL GRADING INFORMATION**

Polish **EXCELLENT**  
Symmetry **EXCELLENT**  
Fluorescence **SLIGHT**  
Inscription(s) **IGI LG795648069**  
Comments: This Laboratory Grown Diamond was created by Chemical Vapor Deposition (CVD) growth process.  
Indications of post-growth treatment.



**IGI**



May 1, 2026  
IGI Report No **LG795648069**  
**ROUND BRILLIANT**  
**8.11 - 8.13 X 5.04 MM**  
Carat Weight **2.04 CARATS**  
Color Grade **FANCY INTENSE PINK**  
Clarity Grade **VVS 2**  
Cut Grade **IDEAL**  
Depth **62%**  
Table **57%**  
Girdle **Medium To Slightly Thick (Faceted)**  
Culet **Pointed**  
Polish **EXCELLENT**  
Symmetry **EXCELLENT**  
Fluorescence **SLIGHT**  
Inscription(s) **IGI LG795648069**  
Comments: This Laboratory Grown Diamond was created by Chemical Vapor Deposition (CVD) growth process.  
Indications of post-growth treatment.