



**ELECTRONIC COPY**

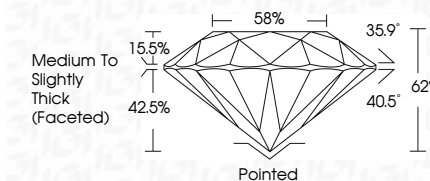
LG795648068  
Report verification at igi.org



May 2, 2026  
IGI Report Number **LG795648068**  
Description **LABORATORY GROWN DIAMOND**  
Shape and Cutting Style **ROUND BRILLIANT**  
Measurements **6.34 - 6.40 X 3.96 MM**

**GRADING RESULTS**

Carat Weight **1.00 CARAT**  
Color Grade **FANCY PINK**  
Clarity Grade **VS 2**  
Cut Grade **IDEAL**

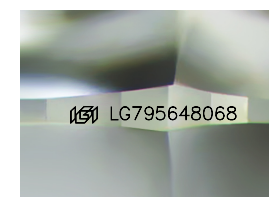


**ADDITIONAL GRADING INFORMATION**

Polish **EXCELLENT**  
Symmetry **EXCELLENT**  
Fluorescence **SLIGHT**  
Inscription(s) **IGI LG795648068**  
Comments: This Laboratory Grown Diamond was created by Chemical Vapor Deposition (CVD) growth process. Indications of post-growth treatment.

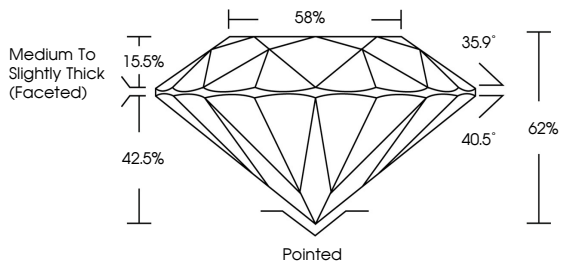


May 2, 2026  
IGI Report No **LG795648068**  
**ROUND BRILLIANT**  
Carat Weight **1.00 CARAT**  
Color Grade **FANCY PINK**  
Clarity Grade **VS 2**  
Depth **IDEAL**  
Table **62%**  
Girdle **88%**  
Medium To Slightly Thick (Faceted)  
Culet **Pointed**  
Polish **EXCELLENT**  
Symmetry **EXCELLENT**  
Fluorescence **SLIGHT**  
Inscription(s) **IGI LG795648068**  
Comments: This Laboratory Grown Diamond was created by Chemical Vapor Deposition (CVD) growth process. Indications of post-growth treatment.

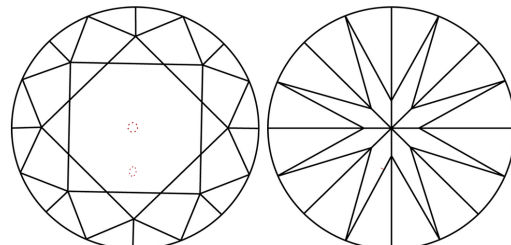


Sample Image Used

**PROPORTIONS**



**CLARITY CHARACTERISTICS**



**KEY TO SYMBOLS**

Red symbols indicate internal characteristics.  
Green symbols indicate external characteristics.

**COLOR**

D	E	F	G	H	I	J	Faint	Very Light	Light
---	---	---	---	---	---	---	-------	------------	-------

**CLARITY**

FL	IF	VS <sup>1-2</sup>	VS <sup>1-2</sup>	SI <sup>1-2</sup>	I <sup>1-3</sup>
Flawless	Internally Flawless	Very Very Slightly Included	Very Slightly Included	Slightly Included	Included

