



ELECTRONIC COPY

LG795648060
Report verification at igi.org



May 1, 2026

IGI Report Number **LG795648060**

Description **LABORATORY GROWN DIAMOND**

Shape and Cutting Style **ROUND BRILLIANT**

Measurements **7.46 - 7.51 X 4.53 MM**

GRADING RESULTS

Carat Weight **1.53 CARAT**

Color Grade **FANCY PINK**

Clarity Grade **VVS 2**

Cut Grade **IDEAL**

May 1, 2026

IGI Report Number **LG795648060**

Description **LABORATORY GROWN DIAMOND**

Shape and Cutting Style **ROUND BRILLIANT**

Measurements **7.46 - 7.51 X 4.53 MM**

GRADING RESULTS

Carat Weight **1.53 CARAT**

Color Grade **FANCY PINK**

Clarity Grade **VVS 2**

Cut Grade **IDEAL**

ADDITIONAL GRADING INFORMATION

Polish **EXCELLENT**

Symmetry **EXCELLENT**

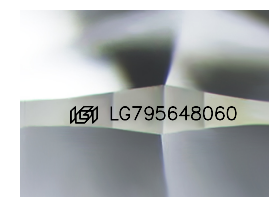
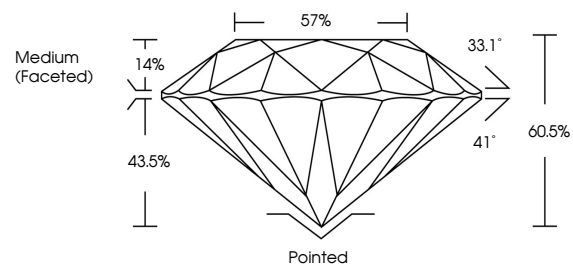
Fluorescence **SLIGHT**

Inscription(s) **LG795648060**

Comments: This Laboratory Grown Diamond was created by Chemical Vapor Deposition (CVD) growth process.

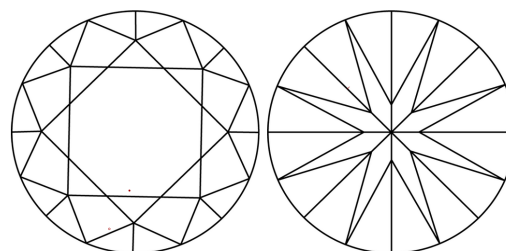
Indications of post-growth treatment.

PROPORTIONS



Sample Image Used

CLARITY CHARACTERISTICS



KEY TO SYMBOLS

Red symbols indicate internal characteristics.
Green symbols indicate external characteristics.

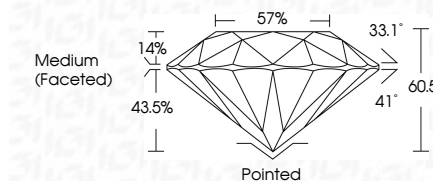
COLOR

D E F G H I J Faint Very Light Light

CLARITY

FL IF VVS¹⁻² VS¹⁻² SI¹⁻² I¹⁻³

Flawless Internally Flawless Very Very Slightly Included Very Slightly Included Slightly Included Included



ADDITIONAL GRADING INFORMATION

Polish **EXCELLENT**

Symmetry **EXCELLENT**

Fluorescence **SLIGHT**

Inscription(s) **LG795648060**

Comments: This Laboratory Grown Diamond was created by Chemical Vapor Deposition (CVD) growth process. Indications of post-growth treatment.



May 1, 2026
IGI Report No LG795648060
ROUND BRILLIANT

1.53 CARAT
FANCY PINK

Color Grade
VVS 2

Clarity Grade
IDEAL

Depth
60.5%

Table
14%

Crown Angle
33.1°

Pavilion Angle
41°

Ratio
57%

Medium (Faceted)

Cut
Pointed

Polish
EXCELLENT

Symmetry
EXCELLENT

Fluorescence
SLIGHT

Inscription(s)
igi LG795648060

Comments:
This Laboratory Grown Diamond was created by Chemical Vapor Deposition (CVD) growth process. Indications of post-growth treatment.