



**ELECTRONIC COPY**

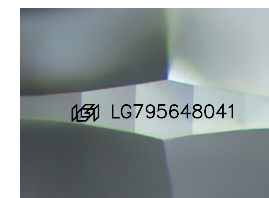
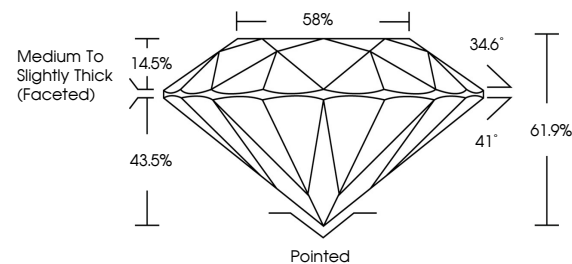
LG795648041  
Report verification at igi.org



May 2, 2026  
IGI Report Number **LG795648041**  
Description **LABORATORY GROWN DIAMOND**  
Shape and Cutting Style **ROUND BRILLIANT**  
Measurements **6.41 - 6.44 X 3.98 MM**  
**GRADING RESULTS**  
Carat Weight **1.01 CARAT**  
Color Grade **FANCY INTENSE PINK**  
Clarity Grade **SI 1**  
Cut Grade **IDEAL**

May 2, 2026  
IGI Report Number **LG795648041**  
Description **LABORATORY GROWN DIAMOND**  
Shape and Cutting Style **ROUND BRILLIANT**  
Measurements **6.41 - 6.44 X 3.98 MM**

**PROPORTIONS**

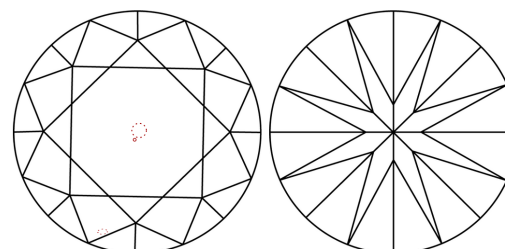


Sample Image Used

**GRADING RESULTS**

Carat Weight **1.01 CARAT**  
Color Grade **FANCY INTENSE PINK**  
Clarity Grade **SI 1**  
Cut Grade **IDEAL**

**CLARITY CHARACTERISTICS**



**KEY TO SYMBOLS**

Red symbols indicate internal characteristics.  
Green symbols indicate external characteristics.

**ADDITIONAL GRADING INFORMATION**

Polish **EXCELLENT**  
Symmetry **EXCELLENT**  
Fluorescence **SLIGHT**  
Inscription(s) **IGI LG795648041**

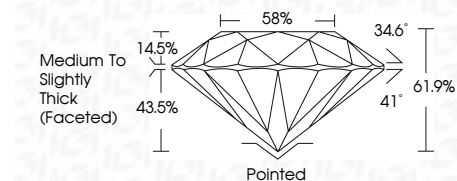
Comments: This Laboratory Grown Diamond was created by Chemical Vapor Deposition (CVD) growth process.  
Indications of post-growth treatment.

**COLOR**

D E F G H I J Faint Very Light Light

**CLARITY**

FL	IF	VS <sup>1-2</sup>	VS <sup>1-2</sup>	SI <sup>1-2</sup>	I <sup>1-3</sup>
Flawless	Internally Flawless	Very Very Slightly Included	Very Slightly Included	Slightly Included	Included



**ADDITIONAL GRADING INFORMATION**

Polish **EXCELLENT**  
Symmetry **EXCELLENT**  
Fluorescence **SLIGHT**  
Inscription(s) **IGI LG795648041**  
Comments: This Laboratory Grown Diamond was created by Chemical Vapor Deposition (CVD) growth process.  
Indications of post-growth treatment.



May 2, 2026  
IGI Report No **LG795648041**  
**ROUND BRILLIANT**  
**6.41 - 6.44 X 3.98 MM**  
**1.01 CARAT**  
**FANCY INTENSE PINK**  
**SI 1**  
**IDEAL**  
**61.9%**  
**58%**  
**Medium To Slightly Thick (Faceted)**  
**Pointed**  
**EXCELLENT**  
**EXCELLENT**  
**SLIGHT**  
**IGI LG795648041**  
Comments: This Laboratory Grown Diamond was created by Chemical Vapor Deposition (CVD) growth process.  
Indications of post-growth treatment.