



ELECTRONIC COPY

LG795648015
Report verification at igi.org



May 2, 2026
IGI Report Number LG795648015
Description LABORATORY GROWN DIAMOND
Shape and Cutting Style ROUND BRILLIANT
Measurements 8.17 - 8.20 X 5.00 MM
GRADING RESULTS
Carat Weight 2.04 CARATS
Color Grade FANCY INTENSE PINK
Clarity Grade VVS 2
Cut Grade IDEAL

May 2, 2026
IGI Report Number LG795648015
Description LABORATORY GROWN DIAMOND
Shape and Cutting Style ROUND BRILLIANT
Measurements 8.17 - 8.20 X 5.00 MM

GRADING RESULTS

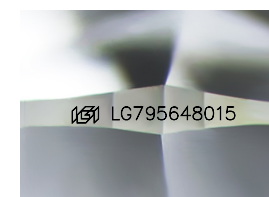
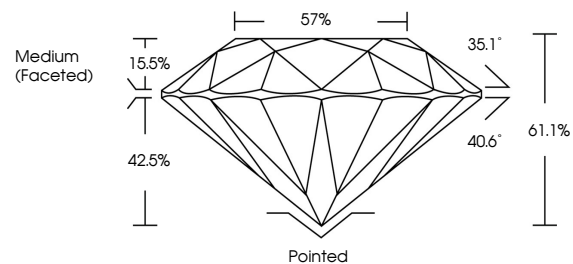
Carat Weight 2.04 CARATS
Color Grade FANCY INTENSE PINK
Clarity Grade VVS 2
Cut Grade IDEAL

ADDITIONAL GRADING INFORMATION

Polish EXCELLENT
Symmetry EXCELLENT
Fluorescence SLIGHT
Inscription(s) LG795648015

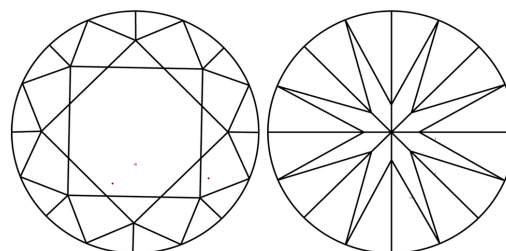
Comments: This Laboratory Grown Diamond was created by Chemical Vapor Deposition (CVD) growth process.
Indications of post-growth treatment.

PROPORTIONS



Sample Image Used

CLARITY CHARACTERISTICS



KEY TO SYMBOLS

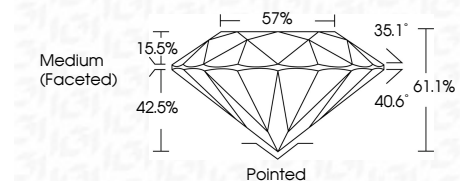
Red symbols indicate internal characteristics.
Green symbols indicate external characteristics.

COLOR

D E F G H I J Faint Very Light Light

CLARITY

FL IF VVS 1-2 VS 1-2 SI 1-2 I 1-3
Flawless Internally Flawless Very Very Slightly Included Very Slightly Included Slightly Included Included



ADDITIONAL GRADING INFORMATION

Polish EXCELLENT
Symmetry EXCELLENT
Fluorescence SLIGHT
Inscription(s) LG795648015
Comments: This Laboratory Grown Diamond was created by Chemical Vapor Deposition (CVD) growth process.
Indications of post-growth treatment.



May 2, 2026
IGI Report No LG795648015
ROUND BRILLIANT
8.17 - 8.20 X 5.00 MM
2.04 CARATS
FANCY INTENSE PINK
VVS 2
IDEAL
61.1%
57%
Medium (Faceted)
Pointed
EXCELLENT
EXCELLENT
SLIGHT
IGI LG795648015
Comments: This Laboratory Grown Diamond was created by Chemical Vapor Deposition (CVD) growth process.
Indications of post-growth treatment.