



**ELECTRONIC COPY**

LG795647993  
Report verification at igi.org



May 2, 2026  
IGI Report Number **LG795647993**  
Description **LABORATORY GROWN DIAMOND**  
Shape and Cutting Style **ROUND BRILLIANT**  
Measurements **8.38 - 8.42 X 5.09 MM**  
**GRADING RESULTS**  
Carat Weight **2.19 CARATS**  
Color Grade **FANCY LIGHT PINK**  
Clarity Grade **VS 1**  
Cut Grade **IDEAL**

May 2, 2026  
IGI Report Number **LG795647993**  
Description **LABORATORY GROWN DIAMOND**  
Shape and Cutting Style **ROUND BRILLIANT**  
Measurements **8.38 - 8.42 X 5.09 MM**

**GRADING RESULTS**

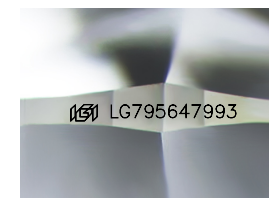
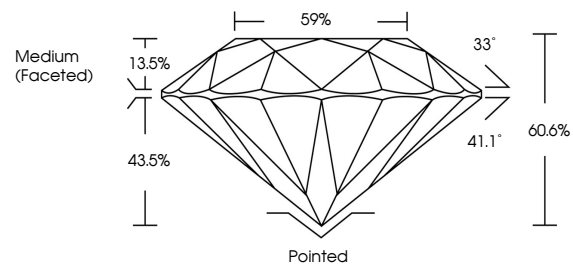
Carat Weight **2.19 CARATS**  
Color Grade **FANCY LIGHT PINK**  
Clarity Grade **VS 1**  
Cut Grade **IDEAL**

**ADDITIONAL GRADING INFORMATION**

Polish **EXCELLENT**  
Symmetry **EXCELLENT**  
Fluorescence **SLIGHT**  
Inscription(s) **IGI LG795647993**

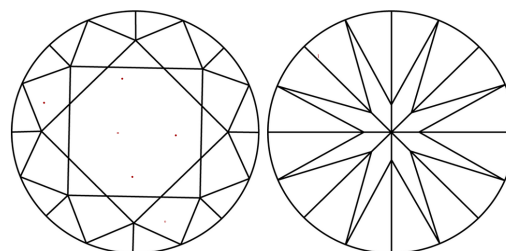
Comments: This Laboratory Grown Diamond was created by Chemical Vapor Deposition (CVD) growth process.  
Indications of post-growth treatment.

**PROPORTIONS**



Sample Image Used

**CLARITY CHARACTERISTICS**



**KEY TO SYMBOLS**

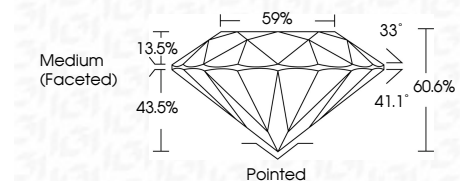
Red symbols indicate internal characteristics.  
Green symbols indicate external characteristics.

**COLOR**

D E F G H I J Faint Very Light Light

**CLARITY**

| FL       | IF                  | VS <sup>1-2</sup>           | VS <sup>1-2</sup>      | SI <sup>1-2</sup> | I <sup>1-3</sup> |
|----------|---------------------|-----------------------------|------------------------|-------------------|------------------|
| Flawless | Internally Flawless | Very Very Slightly Included | Very Slightly Included | Slightly Included | Included         |



**ADDITIONAL GRADING INFORMATION**

Polish **EXCELLENT**  
Symmetry **EXCELLENT**  
Fluorescence **SLIGHT**  
Inscription(s) **IGI LG795647993**  
Comments: This Laboratory Grown Diamond was created by Chemical Vapor Deposition (CVD) growth process.  
Indications of post-growth treatment.



May 2, 2026  
IGI Report No **LG795647993**  
**ROUND BRILLIANT**  
**8.38 - 8.42 X 5.09 MM**  
Carat Weight **2.19 CARATS**  
Color Grade **FANCY LIGHT PINK**  
Clarity Grade **VS 1**  
Depth **IDEAL**  
Table **60.6%**  
Girdle **Medium (Faceted)**  
Culet **Pointed**  
Polish **EXCELLENT**  
Symmetry **EXCELLENT**  
Fluorescence **SLIGHT**  
Inscription(s) **IGI LG795647993**  
Comments: This Laboratory Grown Diamond was created by Chemical Vapor Deposition (CVD) growth process.  
Indications of post-growth treatment.