



ELECTRONIC COPY

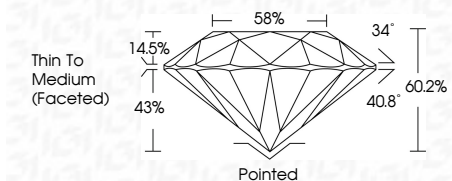
LG795647985
Report verification at igi.org



April 30, 2026
IGI Report Number **LG795647985**
Description **LABORATORY GROWN DIAMOND**
Shape and Cutting Style **ROUND BRILLIANT**
Measurements **6.57 - 6.61 X 3.97 MM**

GRADING RESULTS

Carat Weight **1.04 CARAT**
Color Grade **FANCY LIGHT PINK**
Clarity Grade **VVS 2**
Cut Grade **IDEAL**

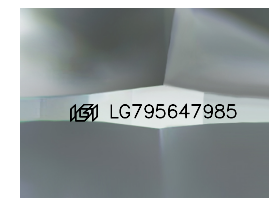


ADDITIONAL GRADING INFORMATION

Polish **EXCELLENT**
Symmetry **EXCELLENT**
Fluorescence **SLIGHT**
Inscription(s) **IGI LG795647985**
Comments: This Laboratory Grown Diamond was created by Chemical Vapor Deposition (CVD) growth process. Indications of post-growth treatment.

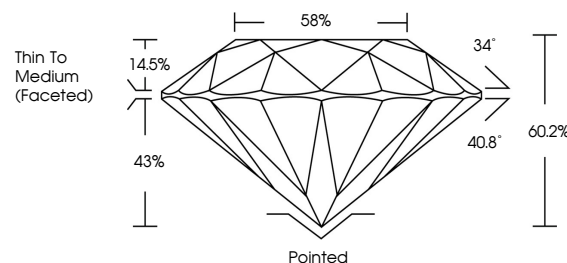


April 30, 2026
IGI Report No LG795647985
ROUND BRILLIANT
6.57 - 6.61 X 3.97 MM
1.04 CARAT
FANCY LIGHT PINK
Color Grade
VVS 2
Clarity Grade
IDEAL
Depth
60.2%
Table
58%
Thin To Medium (Faceted)
Culet
Pointed
Polish
EXCELLENT
Symmetry
EXCELLENT
Fluorescence
SLIGHT
Inscription(s)
IGI LG795647985
Comments: This Laboratory Grown Diamond was created by Chemical Vapor Deposition (CVD) growth process. Indications of post-growth treatment.

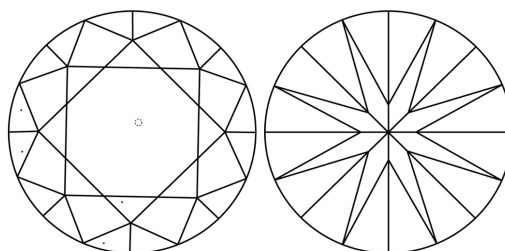


Sample Image Used

PROPORTIONS



CLARITY CHARACTERISTICS



KEY TO SYMBOLS

Red symbols indicate internal characteristics.
Green symbols indicate external characteristics.

COLOR

D E F G H I J Faint Very Light Light

CLARITY

FL	IF	VVS ¹⁻²	VS ¹⁻²	SI ¹⁻²	I ¹⁻³
Flawless	Internally Flawless	Very Very Slightly Included	Very Slightly Included	Slightly Included	Included

