



**ELECTRONIC COPY**

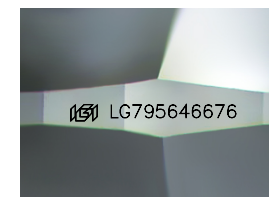
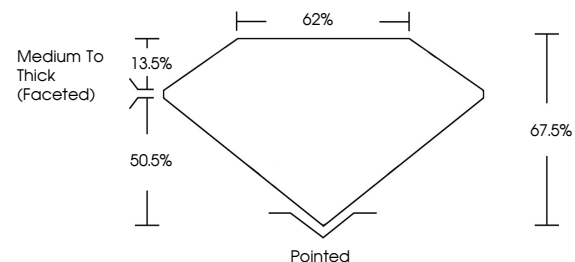
LG795646676  
Report verification at igi.org



April 29, 2026  
IGI Report Number **LG795646676**  
Description **LABORATORY GROWN DIAMOND**  
Shape and Cutting Style **CUSHION MODIFIED BRILLIANT**  
Measurements **9.70 X 7.05 X 4.76 MM**  
**GRADING RESULTS**  
Carat Weight **2.59 CARATS**  
Color Grade **E**  
Clarity Grade **VS 1**

April 29, 2026  
IGI Report Number **LG795646676**  
Description **LABORATORY GROWN DIAMOND**  
Shape and Cutting Style **CUSHION MODIFIED BRILLIANT**  
Measurements **9.70 X 7.05 X 4.76 MM**

**PROPORTIONS**

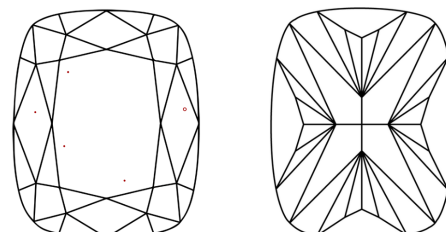


Sample Image Used

**GRADING RESULTS**

Carat Weight **2.59 CARATS**  
Color Grade **E**  
Clarity Grade **VS 1**

**CLARITY CHARACTERISTICS**



**KEY TO SYMBOLS**

Red symbols indicate internal characteristics.  
Green symbols indicate external characteristics.

**ADDITIONAL GRADING INFORMATION**

Polish **EXCELLENT**  
Symmetry **EXCELLENT**  
Fluorescence **NONE**  
Inscription(s) **IGI LG795646676**

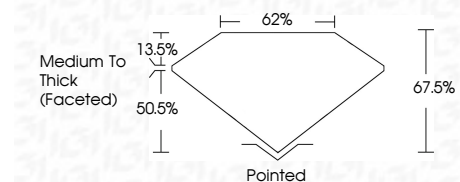
Comments: This Laboratory Grown Diamond was created by Chemical Vapor Deposition (CVD) growth process.  
Type IIa

**COLOR**

D E F G H I J Faint Very Light Light

**CLARITY**

FL	IF	VS <sup>1-2</sup>	VS <sup>1-2</sup>	SI <sup>1-2</sup>	I <sup>1-3</sup>
Flawless	Internally Flawless	Very Very Slightly Included	Very Slightly Included	Slightly Included	Included



**ADDITIONAL GRADING INFORMATION**

Polish **EXCELLENT**  
Symmetry **EXCELLENT**  
Fluorescence **NONE**  
Inscription(s) **IGI LG795646676**  
Comments: This Laboratory Grown Diamond was created by Chemical Vapor Deposition (CVD) growth process.  
Type IIa



April 29, 2026  
IGI Report No LG795646676  
**CUSHION MODIFIED BRILLIANT**  
9.70 X 7.05 X 4.76 MM  
2.59 CARATS  
E  
VS 1  
67.0%  
62%  
Medium To Thick (Faceted)  
Pointed  
EXCELLENT  
EXCELLENT  
NONE  
IGI LG795646676

Comments: This Laboratory Grown Diamond was created by Chemical Vapor Deposition (CVD) growth process.  
Type IIa