



ELECTRONIC COPY

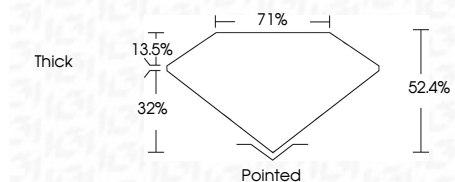
LG795646124
Report verification at igi.org



April 25, 2026
IGI Report Number **LG795646124**
Description **LABORATORY GROWN DIAMOND**
Shape and Cutting Style **MODIFIED LOZENGES STEP CUT**
Measurements **13.68 X 9.43 X 4.94 MM**

GRADING RESULTS

Carat Weight **4.30 CARATS**
Color Grade **F**
Clarity Grade **VS 1**



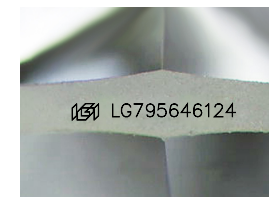
ADDITIONAL GRADING INFORMATION

Polish **EXCELLENT**
Symmetry **EXCELLENT**
Fluorescence **NONE**
Inscription(s) **IGI LG795646124**
Comments: This Laboratory Grown Diamond was created by Chemical Vapor Deposition (CVD) growth process. Type IIa



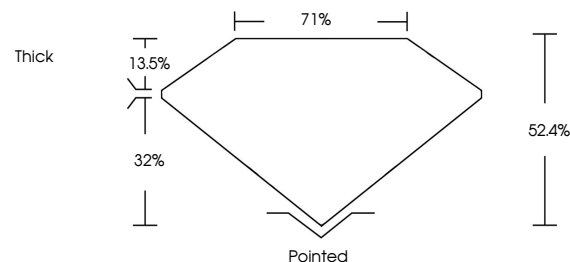
April 25, 2026
IGI Report No LG795646124
MODIFIED LOZENGES STEP CUT
13.68 X 9.43 X 4.94 MM
4.30 CARATS
F
VS 1
62.4%
71%
Thick
Pointed
EXCELLENT
EXCELLENT
NONE
IGI LG795646124

Comments: This Laboratory Grown Diamond was created by Chemical Vapor Deposition (CVD) growth process. Type IIa

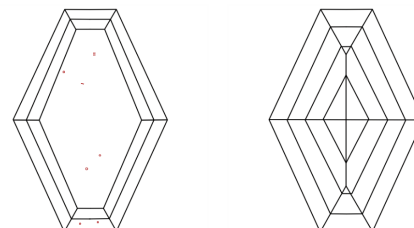


Sample Image Used

PROPORTIONS



CLARITY CHARACTERISTICS



KEY TO SYMBOLS

Red symbols indicate internal characteristics.
Green symbols indicate external characteristics.

COLOR

D E F G H I J Faint Very Light Light

CLARITY

FL	IF	VS ¹⁻²	VS ¹⁻²	SI ¹⁻²	I ¹⁻³
Flawless	Internally Flawless	Very Very Slightly Included	Very Slightly Included	Slightly Included	Included

