



ELECTRONIC COPY

LG795645268
Report verification at igi.org



May 14, 2026
IGI Report Number **LG795645268**
Description **LABORATORY GROWN DIAMOND**
Shape and Cutting Style **CUT CORNERED
RECTANGULAR MIXED CUT**
Measurements **9.29 X 5.74 X 3.55 MM**
GRADING RESULTS
Carat Weight **2.01 CARATS**
Color Grade **FANCY YELLOW**
Clarity Grade **VVS 1**

LABORATORY GROWN DIAMOND REPORT

May 14, 2026
IGI Report Number **LG795645268**
Description **LABORATORY GROWN DIAMOND**
Shape and Cutting Style **CUT CORNERED RECTANGULAR
MIXED CUT**
Measurements **9.29 X 5.74 X 3.55 MM**

GRADING RESULTS

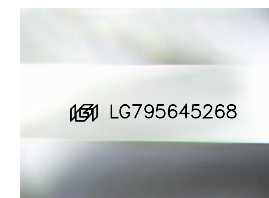
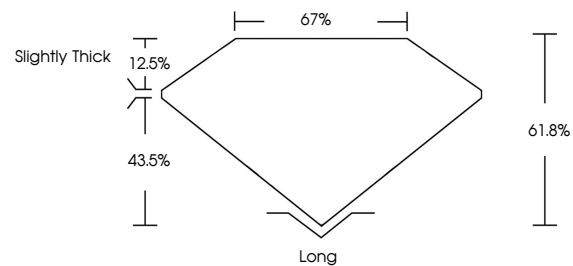
Carat Weight **2.01 CARATS**
Color Grade **FANCY YELLOW**
Clarity Grade **VVS 1**

ADDITIONAL GRADING INFORMATION

Polish **EXCELLENT**
Symmetry **EXCELLENT**
Fluorescence **NONE**
Inscription(s) **IGI LG795645268**

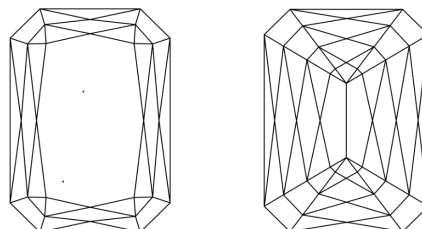
Comments: This Laboratory Grown Diamond was created by Chemical Vapor Deposition (CVD) growth process.

PROPORTIONS



Sample Image Used

CLARITY CHARACTERISTICS



KEY TO SYMBOLS

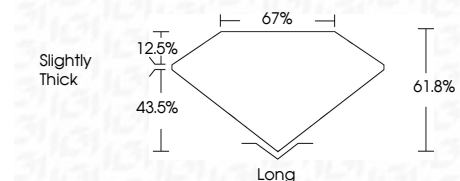
Red symbols indicate internal characteristics.
Green symbols indicate external characteristics.

COLOR

D E F G H I J Faint Very Light Light

CLARITY

FL	IF	VVS ¹⁻²	VS ¹⁻²	SI ¹⁻²	I ¹⁻³
Flawless	Internally Flawless	Very Very Slightly Included	Very Slightly Included	Slightly Included	Included



ADDITIONAL GRADING INFORMATION

Polish **EXCELLENT**
Symmetry **EXCELLENT**
Fluorescence **NONE**
Inscription(s) **IGI LG795645268**
Comments: This Laboratory Grown Diamond was created by Chemical Vapor Deposition (CVD) growth process.



May 14, 2026
IGI Report No LG795645268
CUT CORNERED RECT. MIXED CUT
2.01 CARATS
FANCY YELLOW
Color Grade VVS 1
Depth 61.8%
Table 43.5%
Girdle Slightly Thick
Culet Long
Polish EXCELLENT
Symmetry EXCELLENT
Fluorescence NONE
Inscription(s) IGI LG795645268
Comments: This Laboratory Grown Diamond was created by Chemical Vapor Deposition (CVD) growth process.