



ELECTRONIC COPY

LG795644044
Report verification at igi.org



May 13, 2026
IGI Report Number **LG795644044**
Description **LABORATORY GROWN DIAMOND**
Shape and Cutting Style **CUSHION MODIFIED BRILLIANT**
Measurements **6.79 X 5.08 X 3.44 MM**
GRADING RESULTS
Carat Weight **1.03 CARAT**
Color Grade **VERY LIGHT BROWN**
Clarity Grade **VS 1**

May 13, 2026
IGI Report Number **LG795644044**
Description **LABORATORY GROWN DIAMOND**
Shape and Cutting Style **CUSHION MODIFIED BRILLIANT**
Measurements **6.79 X 5.08 X 3.44 MM**

GRADING RESULTS

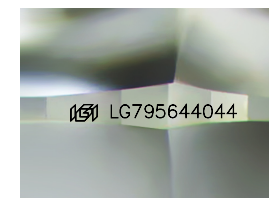
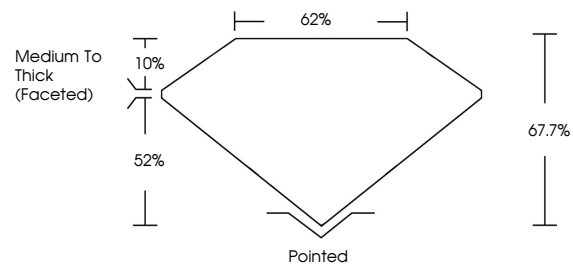
Carat Weight **1.03 CARAT**
Color Grade **VERY LIGHT BROWN**
Clarity Grade **VS 1**

ADDITIONAL GRADING INFORMATION

Polish **VERY GOOD**
Symmetry **VERY GOOD**
Fluorescence **SLIGHT**
Inscription(s) **IGI LG795644044**

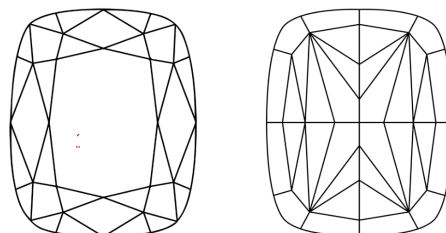
Comments: This Laboratory Grown Diamond was created by Chemical Vapor Deposition (CVD) growth process.
Type IIa

PROPORTIONS



Sample Image Used

CLARITY CHARACTERISTICS



KEY TO SYMBOLS

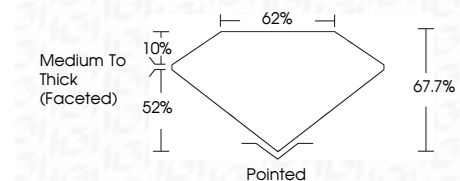
Red symbols indicate internal characteristics.
Green symbols indicate external characteristics.

COLOR

D E F G H I J Faint Very Light Light

CLARITY

FL	IF	VS ¹⁻²	VS ¹⁻²	SI ¹⁻²	I ¹⁻³
Flawless	Internally Flawless	Very Very Slightly Included	Very Slightly Included	Slightly Included	Included



ADDITIONAL GRADING INFORMATION

Polish **VERY GOOD**
Symmetry **VERY GOOD**
Fluorescence **SLIGHT**
Inscription(s) **IGI LG795644044**
Comments: This Laboratory Grown Diamond was created by Chemical Vapor Deposition (CVD) growth process.
Type IIa



May 13, 2026
IGI Report No LG795644044
CUSHION MODIFIED BRILLIANT
6.79 X 5.08 X 3.44 MM
Carat Weight **1.03 CARAT**
Color Grade **VERY LIGHT BROWN**
Clarity Grade **VS 1**
Table **67.7%**
Girdle **62%**
Culet **Medium To Thick (Faceted)**
Polish **Pointed**
Symmetry **VERY GOOD**
Fluorescence **VERY GOOD**
Inscription(s) **SLIGHT**
IGI LG795644044
Comments: This Laboratory Grown Diamond was created by Chemical Vapor Deposition (CVD) growth process.
Type IIa