



**ELECTRONIC COPY**

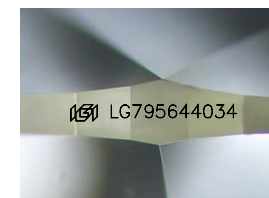
LG795644034  
Report verification at igi.org



May 29, 2026  
IGI Report Number **LG795644034**  
Description **LABORATORY GROWN DIAMOND**

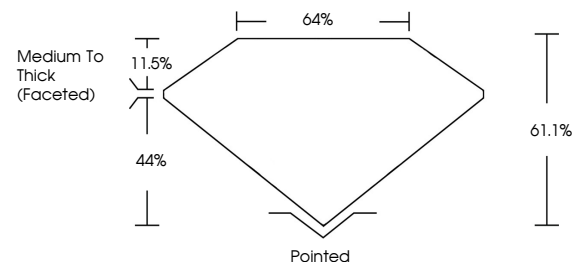
Shape and Cutting Style **PEAR MODIFIED BRILLIANT**  
Measurements **8.24 X 5.35 X 3.27 MM**

**GRADING RESULTS**  
Carat Weight **1.01 CARAT**  
Color Grade **FANCY VIVID GREEN**  
Clarity Grade **VVS 2**

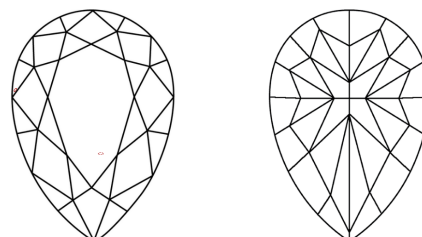


Sample Image Used

**PROPORTIONS**



**CLARITY CHARACTERISTICS**



**KEY TO SYMBOLS**

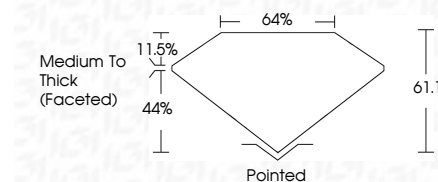
Red symbols indicate internal characteristics.  
Green symbols indicate external characteristics.

**COLOR**

D E F G H I J Faint Very Light Light

**CLARITY**

FL	IF	VVS <sup>1-2</sup>	VS <sup>1-2</sup>	SI <sup>1-2</sup>	I <sup>1-3</sup>
Flawless	Internally Flawless	Very Very Slightly Included	Very Slightly Included	Slightly Included	Included



**ADDITIONAL GRADING INFORMATION**

Polish **EXCELLENT**  
Symmetry **EXCELLENT**  
Fluorescence **VERY SLIGHT**  
Inscription(s) **IGI LG795644034**

Comments: This Laboratory Grown Diamond was created by Chemical Vapor Deposition (CVD) growth process. Indications of post-growth treatment.



May 29, 2026  
IGI Report No **LG795644034**  
**PEAR MODIFIED BRILLIANT**  
**8.24 X 5.35 X 3.27 MM**  
Carat Weight **1.01 CARAT**  
Color Grade **FANCY VIVID GREEN**  
Clarity Grade **VVS 2**  
Depth **61.1%**  
Table **64%**  
Girdle **Medium To Thick (Faceted)**  
Culet **Pointed**  
Polish **EXCELLENT**  
Symmetry **EXCELLENT**  
Fluorescence **VERY SLIGHT**  
Inscription(s) **IGI LG795644034**  
Comments: This Laboratory Grown Diamond was created by Chemical Vapor Deposition (CVD) growth process. Indications of post-growth treatment.