



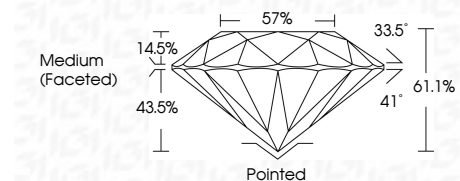
ELECTRONIC COPY

LG795643824
Report verification at igi.org



May 14, 2026
IGI Report Number **LG795643824**
Description **LABORATORY GROWN DIAMOND**
Shape and Cutting Style **ROUND BRILLIANT**
Measurements **8.80 - 8.85 X 5.39 MM**

GRADING RESULTS
Carat Weight **2.56 CARATS**
Color Grade **D**
Clarity Grade **FLAWLESS**
Cut Grade **IDEAL**



ADDITIONAL GRADING INFORMATION
Polish **EXCELLENT**
Symmetry **EXCELLENT**
Fluorescence **NONE**
Inscription(s) **IGI LG795643824**
Comments: HEARTS & ARROWS
As Grown - No indication of post-growth treatment.
This Laboratory Grown Diamond was created by High Pressure High Temperature (HPHT) growth process.
Type II

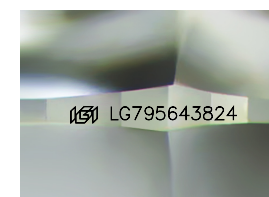


May 14, 2026
IGI Report No LG795643824
ROUND BRILLIANT
8.80 - 8.85 X 5.39 MM
2.56 CARATS
D
FLAWLESS
IDEAL
61.1%
57%
Medium (Faceted)

Culet
Polish
Symmetry
Fluorescence
Inscriptions(s)

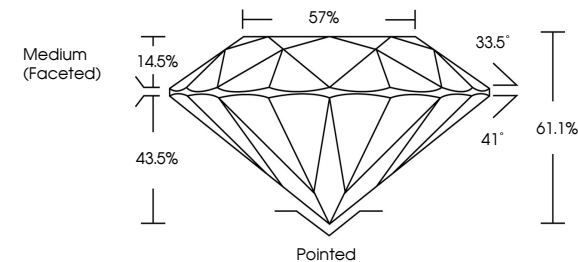
Pointed
EXCELLENT
EXCELLENT
NONE
IGI LG795643824

Comments:
HEARTS & ARROWS
As Grown - No indication of post-growth
treatment.
This Laboratory Grown Diamond was
created by High Pressure High
Temperature (HPHT) growth process.
Type II

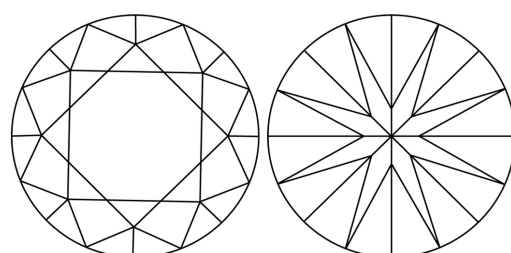


Sample Image Used

PROPORTIONS



CLARITY CHARACTERISTICS



KEY TO SYMBOLS
Red symbols indicate internal characteristics.
Green symbols indicate external characteristics.



COLOR

D	E	F	G	H	I	J	Faint	Very Light	Light
---	---	---	---	---	---	---	-------	------------	-------

CLARITY

FL	IF	VS ¹⁻²	VS ¹⁻²	SI ¹⁻²	I ¹⁻³
Flawless	Internally Flawless	Very Very Slightly Included	Very Slightly Included	Slightly Included	Included

