



ELECTRONIC COPY

LG795643139
Report verification at igi.org



May 20, 2026
IGI Report Number **LG795643139**
Description **LABORATORY GROWN DIAMOND**
Shape and Cutting Style **HEART BRILLIANT**
Measurements **8.68 X 9.91 X 6.04 MM**
GRADING RESULTS
Carat Weight **3.00 CARATS**
Color Grade **D**
Clarity Grade **FLAWLESS**

LABORATORY GROWN DIAMOND REPORT

May 20, 2026
IGI Report Number **LG795643139**
Description **LABORATORY GROWN DIAMOND**
Shape and Cutting Style **HEART BRILLIANT**
Measurements **8.68 X 9.91 X 6.04 MM**

GRADING RESULTS

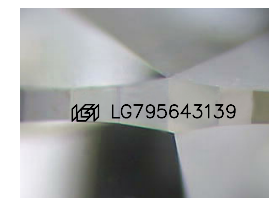
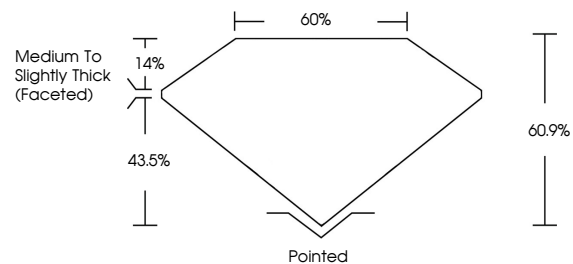
Carat Weight **3.00 CARATS**
Color Grade **D**
Clarity Grade **FLAWLESS**

ADDITIONAL GRADING INFORMATION

Polish **EXCELLENT**
Symmetry **EXCELLENT**
Fluorescence **NONE**
Inscription(s) **IGI LG795643139**

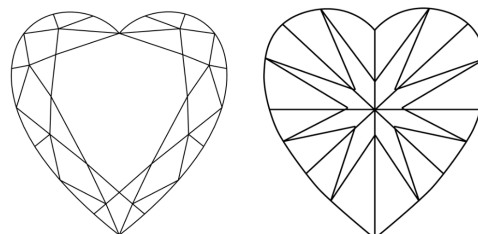
Comments: As Grown - No indication of post-growth treatment.
This Laboratory Grown Diamond was created by High Pressure High Temperature (HPHT) growth process.
Type II

PROPORTIONS



Sample Image Used

CLARITY CHARACTERISTICS



KEY TO SYMBOLS

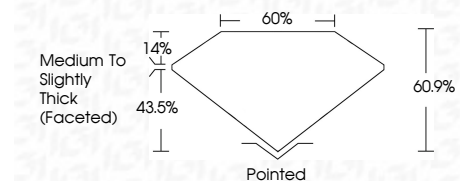
Red symbols indicate internal characteristics.
Green symbols indicate external characteristics.

COLOR

D E F G H I J Faint Very Light Light

CLARITY

FL	IF	VS ¹⁻²	VS ¹⁻²	SI ¹⁻²	I ¹⁻³
Flawless	Internally Flawless	Very Very Slightly Included	Very Slightly Included	Slightly Included	Included



ADDITIONAL GRADING INFORMATION

Polish **EXCELLENT**
Symmetry **EXCELLENT**
Fluorescence **NONE**
Inscription(s) **IGI LG795643139**
Comments: As Grown - No indication of post-growth treatment.
This Laboratory Grown Diamond was created by High Pressure High Temperature (HPHT) growth process.
Type II



May 20, 2026
IGI Report No LG795643139
HEART BRILLIANT
8.68 X 9.91 X 6.04 MM
3.00 CARATS
Color Grade **D**
Clarity Grade **FLAWLESS**
Depth **60.9%**
Table **60%**
Girdle **Medium to Slightly Thick (Faceted)**
Culet **Pointed**
Polish **EXCELLENT**
Symmetry **EXCELLENT**
Fluorescence **NONE**
Inscription(s) **IGI LG795643139**
Comments: As Grown - No indication of post-growth treatment.
This Laboratory Grown Diamond was created by High Pressure High Temperature (HPHT) growth process.
Type II