



ELECTRONIC COPY

LG795643045
Report verification at igi.org



May 13, 2026

IGI Report Number **LG795643045**

Description **LABORATORY GROWN DIAMOND**

Shape and Cutting Style **PEAR MODIFIED BRILLIANT**

Measurements **11.72 X 7.10 X 4.21 MM**

GRADING RESULTS

Carat Weight **2.50 CARATS**

Color Grade **FANCY VIVID BLUE**

Clarity Grade **VS 1**

May 13, 2026
IGI Report Number **LG795643045**
Description **LABORATORY GROWN DIAMOND**
Shape and Cutting Style **PEAR MODIFIED BRILLIANT**
Measurements **11.72 X 7.10 X 4.21 MM**

GRADING RESULTS

Carat Weight **2.50 CARATS**

Color Grade **FANCY VIVID BLUE**

Clarity Grade **VS 1**

ADDITIONAL GRADING INFORMATION

Polish **EXCELLENT**

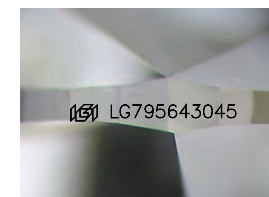
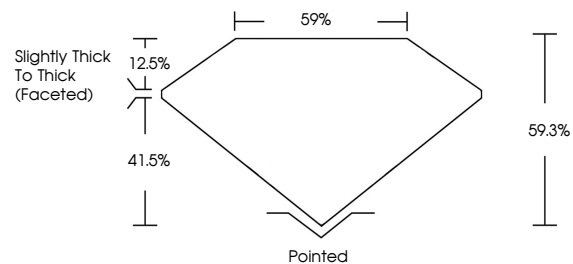
Symmetry **EXCELLENT**

Fluorescence **NONE**

Inscription(s) **IGI LG795643045**

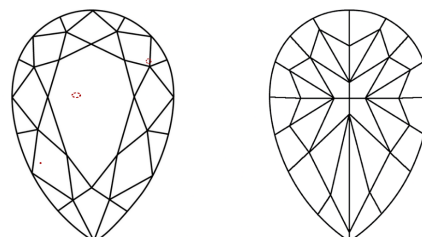
Comments: This Laboratory Grown Diamond was created by Chemical Vapor Deposition (CVD) growth process.
Indications of post-growth treatment.

PROPORTIONS



Sample Image Used

CLARITY CHARACTERISTICS



KEY TO SYMBOLS

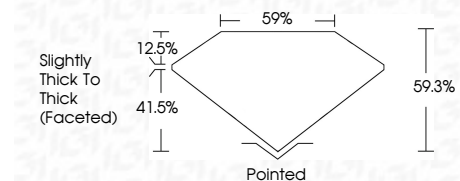
Red symbols indicate internal characteristics.
Green symbols indicate external characteristics.

COLOR

D E F G H I J Faint Very Light Light

CLARITY

FL	IF	VS ¹⁻²	VS ¹⁻²	SI ¹⁻²	I ¹⁻³
Flawless	Internally Flawless	Very Very Slightly Included	Very Slightly Included	Slightly Included	Included



ADDITIONAL GRADING INFORMATION

Polish **EXCELLENT**

Symmetry **EXCELLENT**

Fluorescence **NONE**

Inscription(s) **IGI LG795643045**

Comments: This Laboratory Grown Diamond was created by Chemical Vapor Deposition (CVD) growth process.
Indications of post-growth treatment.



IGI



May 13, 2026
IGI Report No **LG795643045**
PEAR MODIFIED BRILLIANT
11.72 X 7.10 X 4.21 MM
Carat Weight **2.50 CARATS**
Color Grade **FANCY VIVID BLUE**
Clarity Grade **VS 1**
Table **59%**
Girdle **Slightly Thick To Thick (Faceted)**
Culet **Pointed**
Polish **EXCELLENT**
Symmetry **EXCELLENT**
Fluorescence **NONE**
Inscription(s) **IGI LG795643045**
Comments: This Laboratory Grown Diamond was created by Chemical Vapor Deposition (CVD) growth process.
Indications of post-growth treatment.