



ELECTRONIC COPY

LG795642822
Report verification at igi.org



May 14, 2026
IGI Report Number **LG795642822**
Description **LABORATORY GROWN DIAMOND**
Shape and Cutting Style **SQUARE CUSHION MODIFIED BRILLIANT**
Measurements **5.65 X 5.64 X 3.64 MM**
GRADING RESULTS
Carat Weight **1.02 CARAT**
Color Grade **FANCY VIVID GREEN**
Clarity Grade **VVS 2**

LABORATORY GROWN DIAMOND REPORT

May 14, 2026
IGI Report Number **LG795642822**
Description **LABORATORY GROWN DIAMOND**
Shape and Cutting Style **SQUARE CUSHION MODIFIED BRILLIANT**
Measurements **5.65 X 5.64 X 3.64 MM**

GRADING RESULTS

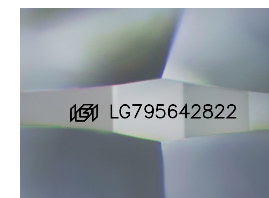
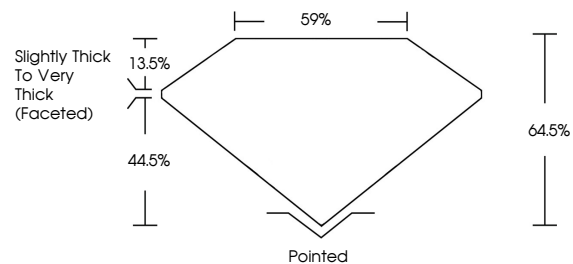
Carat Weight **1.02 CARAT**
Color Grade **FANCY VIVID GREEN**
Clarity Grade **VVS 2**

ADDITIONAL GRADING INFORMATION

Polish **EXCELLENT**
Symmetry **EXCELLENT**
Fluorescence **VERY SLIGHT**
Inscription(s) **IGI LG795642822**

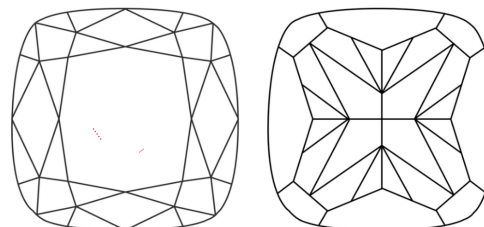
Comments: This Laboratory Grown Diamond was created by Chemical Vapor Deposition (CVD) growth process.
Indications of post-growth treatment.

PROPORTIONS



Sample Image Used

CLARITY CHARACTERISTICS



KEY TO SYMBOLS

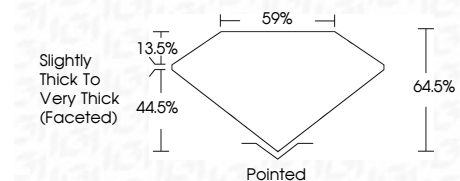
Red symbols indicate internal characteristics.
Green symbols indicate external characteristics.

COLOR

D E F G H I J Faint Very Light Light

CLARITY

FL	IF	VVS ¹⁻²	VS ¹⁻²	SI ¹⁻²	I ¹⁻³
Flawless	Internally Flawless	Very Very Slightly Included	Very Slightly Included	Slightly Included	Included



ADDITIONAL GRADING INFORMATION

Polish **EXCELLENT**
Symmetry **EXCELLENT**
Fluorescence **VERY SLIGHT**
Inscription(s) **IGI LG795642822**
Comments: This Laboratory Grown Diamond was created by Chemical Vapor Deposition (CVD) growth process.
Indications of post-growth treatment.



May 14, 2026
IGI Report No LG795642822
SQUARE CUSHION MODIFIED BRILLIANT
5.65 X 5.64 X 3.64 MM
1.02 CARAT
FANCY VIVID GREEN
VVS 2
64.6%
44.5%
Slightly Thick To Very Thick (Faceted)
Pointed
EXCELLENT
EXCELLENT
VERY SLIGHT
IGI LG795642822
Comments: This Laboratory Grown Diamond was created by Chemical Vapor Deposition (CVD) growth process.
Indications of post-growth treatment.